

Industry best sellers



Solutions Industry & Building®



Solutions builder



Solutions Builder

Despite the care taken in the preparation of this catalogue, some errors may remain. The description of the products and their dimensions, technical characteristics and photographs are for information only and shall not form any part of the contract between SIB and the Customer. SIB reserves the right to modify the products as necessary and without prior notice.

SIB can in no way be held responsible for any installation which does not comply with the regulations in force.

Nonostante sia stata prestata la massima attenzione nel redigere il presente catalogo, potrebbero essere comunque presenti alcuni errori. La descrizione dei prodotti e le rispettive dimensioni, caratteristiche tecniche e immagini sono da considerarsi a scopo informativo e non costituiscono parte del contratto tra SIB e il Cliente. SIB si riserva il diritto di modificare i prodotti nella misura necessaria e senza fornire alcun preavviso.

SIB non può in alcun modo essere ritenuta responsabile per eventuali installazioni che non soddisfano le normative in vigore.



Solutions Industry & Building®

Fondata nel 1922, SIB è un'azienda francese avente sede e stabilimento, certificata a norma ISO 9001, a Boulay-Moselle (Francia). Costituita da un team di circa cento dipendenti, SIB sviluppa, produce e commercializza componenti e accessori in plastica e metallo (ottone, acciaio inossidabile). Tali prodotti sono destinati al settore edile, elettrico, ferroviario e alle attività svolte in ambienti ATEX (oil & gas, petrolchimico).

L'esperienza di SIB le conferisce un'influenza nazionale, con circa 880 clienti in Francia, e internazionale, con oltre 2.000 partner e collaboratori a livello globale. Infatti, potendo contare sulla sua storia ed esperienza, SIB si è affermata in diverse aree geografiche (soprattutto Germania, Spagna, paesi scandinavi, Europa orientale, Corea e Stati Uniti). Più recentemente ha consolidato la propria presenza commerciale e affermato la propria competitività aprendo una filiale a Milano (Italia).

Indipendentemente dal Paese o dal partner con cui collabora, SIB si impegna a offrire assistenza globale e prodotti conformi alle norme e alle certificazioni vigenti.

Il nostro obiettivo è offrire e creare soluzioni sostenibili che si adattino al mercato attraverso un servizio clienti di qualità e padronanza di diversi processi, dalla progettazione al marketing, in un ambiente caratterizzato dal miglioramento continuo.

Founded in 1922, SIB is a French industrial company which headquarters and factory, certified ISO 9001, are located in Boulay-Moselle (France). The team of about a hundred employees develops, manufactures and trades plastic and metal (brass and steel) parts and accessories. Its products are used in a variety of sectors, such as building, electric industry, railways and hazardous areas (oil&gas, petrochemical).

By virtue of its extensive knowledge of the business, SIB has a wide national implementation, with over 880 clients in France, and a large international presence, with more than 2000 partners worldwide (Germany, Spain, Scandinavian countries, Eastern Europe, Korea, United States). The recent opening of a subsidiary in Milan (Italy) reinforced SIB's position and competitiveness.

SIB thrives to provide each customer with a comprehensive offer and products compliant with official standards and CERTIFICATION.

Our goal: bring and build adapt sustainable solutions to the market, supported by a high-quality customer service and the expertise of different processes, from conception to distribution, in a continuous progress environment.



SIB Solutions Industry & Building



www.sibadr.com



SIB Solutions Industry & Building



INDUSTRIAL
CABLE GLANDS
& ACCESSORIES

SERRACAVI
E ACCESSORI
INDUSTRIALI

BRASS

PLASTIC

UNIVERSAL WITH LAMELLAS

FOR NON-ARMOURED CABLES

FOR ARMOURED CABLES SWB

EMC TESTED

BRASS LEAD FREE

UNIVERSAL HEAVY DUTY



SIB-TEC
p. 4



SIB-TEC EMC
p. 5



SIB-TEC UL/VDE/NEMA 4X
p. 6



SIB-TEC EMC CAGE 360°
p. 7



SIB-TEC METAL LF + LOCKNUTS
p. 8



WADI-MAX
p. 10



BOULAY
p. 11



SIB-TEC
p. 12 - 13



SIB-TEC SET
p. 12 - 13



CLIP-TEC
p. 14



SPECIFICATIONS / SPECIFICHE p. 15



SIB-TEC Cable Gland Serracavi SIB-TEC



IP PROTECTION:
IP 68

OPERATING TEMPERATURE:
-40 °C / +100 °C

SPECIAL FEATURES:

- Short & long thread
- Reduced sealing available (RED*)
- O-ring included

MATERIAL:

- Nickel-plated brass

- Available in stainless steel 316L
- Sealing: neoprene
- O-ring: nitrile
- Insert: PA6

THREAD:
Metric, PG, NPT

CERTIFICATION:
IEC 62 444

ACCESSORIES AVAILABLE:
See page accessories

INDICE DI PROTEZIONE:
IP 68

INTERVALLO DI TEMPERATURA:
-40 °C / +100 °C

VANTAGGI TECNICI:

- Filettatura corta e lunga
- Disponibili guarnizioni ridotte (RED*)
- Guarnizione inclusa

MATERIALE:

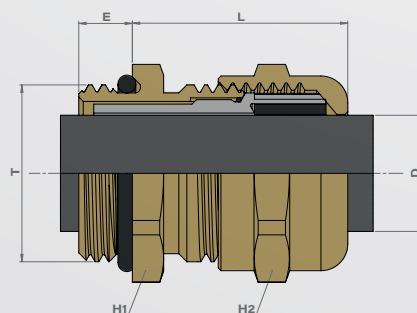
- Ottone nichelato

- Disponibile in inox 316L
- Rivestimento: neoprene
- O-ring: nitrile
- Inserto: PA6

FILETTATURA:
Metrica, PG, NPT

CERTIFICAZIONE:
IEC 62 444

ACCESSORI DISPONIBILI:
Consultare la pagina degli accessori



	Thread (T)	Part Number	Overall cable diameter (D)		H1	H2	E	L	Packing		Thread (T)	Part Number	E	Packing
			Min	Max										
Metric Short	12	C5212000	2,5	6,5	14,0	14,0	5,0	20,0	50	Metric Long	12	C5312000	15,0	50
	16	C5216000	4,0	9,5	17,0	17,0	5,0	23,0	50		16	C5316000	15,0	50
	20	C5220000	7,0	13,0	22,0	22,0	6,0	26,0	50		20	C5320000	15,0	50
	25	C5225000	8,0	16,0	27,0	27,0	7,0	28,0	25		25	C5325000	15,0	25
	32	C5232000	11,0	21,0	34,0	34,0	8,0	30,0	20		32	C5332000	15,0	20
	40	C5240000	15,0	27,0	42,0	42,0	8,0	33,0	10		40	C5340000	15,0	10
	50	C5250000	22,0	35,0	55,0	55,0	9,0	37,0	5		50	C5350000	15,0	5
63	C5263000	35,0	48,0	65,0	65,0	10,0	44,0	5	63	C5363000	15,0	5		
Metric Short RED*	12	C5212040	1,5	5,0	14,0	14,0	5,0	20,0	50	Metric Long RED*	12	C5312040	15,0	50
	16	C5216040	2,5	7,0	17,0	17,0	5,0	23,0	50		16	C5316040	15,0	50
	20	C5220040	4,0	10,0	22,0	22,0	6,0	26,0	50		20	C5320040	15,0	50
	25	C5225040	5,0	13,0	27,0	27,0	7,0	28,0	25		25	C5325040	15,0	25
	32	C5232040	7,0	17,0	34,0	34,0	8,0	30,0	20		32	C5332040	15,0	20
	40	C5240040	10,0	22,0	42,0	42,0	8,0	33,0	10		40	C5340040	15,0	10
	50	C5250040	17,0	29,0	55,0	55,0	9,0	37,0	5		50	C5350040	15,0	5
63	C5263040	28,0	40,0	65,0	65,0	10,0	44,0	5	63	C5363040	15,0	5		
PG Short	07	C5007000	2,5	6,5	14,0	14,0	5,0	20,0	50	PG Long	07	C5107000	15,0	50
	09	C5009000	4,0	9,5	17,0	17,0	6,0	23,0	50		09	C5109000	15,0	50
	11	C5011000	6,0	11,5	20,0	20,0	6,0	24,0	50		11	C5111000	15,0	50
	13	C5013000	7,0	13,0	22,0	22,0	6,5	26,0	50		13	C5113000	15,0	50
	16	C5016000	8,0	15,0	24,0	24,0	6,5	27,5	50		16	C5116000	15,0	50
	21	C5021000	11,0	19,0	30,0	30,0	7,0	28,0	20		21	C5121000	15,0	20
	29	C5029000	16,0	26,0	40,0	40,0	8,0	30,0	20		29	C5129000	15,0	20
	36	C5036000	22,0	34,5	50,0	50,0	9,0	38,0	10		36	C5136000	15,0	10
	42	C5042000	27,0	40,0	58,0	58,0	10,0	40,0	5		42	C5142000	15,0	5
	48	C5048000	35,0	48,0	65,0	65,0	10,0	44,0	5		48	C5148000	15,0	5
48DIN	C5049000	35,0	48,0	65,0	65,0	10,0	44,0	5	48DIN	C5149000	15,0	5		
PG Short RED*	07	C5007400	1,5	5,0	14,0	14,0	5,0	20,0	50	PG Long RED*	07	C5107400	15,0	50
	09	C5009400	2,5	7,0	17,0	17,0	6,0	23,0	50		09	C5109400	15,0	50
	11	C5011400	3,0	8,5	20,0	20,0	6,0	24,0	50		11	C5111400	15,0	50
	13	C5013400	4,0	10,0	22,0	22,0	6,5	26,0	50		13	C5113400	15,0	50
	16	C5016400	5,0	12,0	24,0	24,0	6,5	27,5	50		16	C5116400	15,0	50
	21	C5021400	8,0	16,0	30,0	30,0	7,0	28,0	20		21	C5121400	15,0	20
	29	C5029400	11,0	21,0	40,0	40,0	8,0	30,0	20		29	C5129400	15,0	20
	36	C5036400	16,0	28,0	50,0	50,0	9,0	38,0	10		36	C5136400	15,0	10
	42	C5042400	22,0	34,0	58,0	58,0	10,0	40,0	5		42	C5142400	15,0	5
	48	C5048400	28,0	40,0	65,0	65,0	10,0	44,0	5		48	C5148400	15,0	5
48DIN	C5049400	28,0	40,0	65,0	65,0	10,0	44,0	5	48DIN	C5149400	15,0	5		
NPT	3/8"	C5408000	4,0	9,5	17,0	18,0	15,0	23,0	50	-	-	-	-	
	1/2"	C5412000	7,0	13,0	22,0	23,0	20,0	26,0	50	-	-	-	-	
	3/4"	C5420000	8,0	16,0	27,0	28,0	20,0	28,0	20	-	-	-	-	
	1"	C5428000	11,0	21,0	34,0	36,0	25,0	30,0	20	-	-	-	-	
NPT RED*	3/8"	C5408400	2,5	7,0	17,0	18,0	15,0	23,0	50	-	-	-	-	
	1/2"	C5412400	4,0	10,0	22,0	23,0	20,0	26,0	50	-	-	-	-	
	3/4"	C5420400	5,0	13,0	27,0	28,0	20,0	28,0	20	-	-	-	-	
	1"	C5428400	7,0	17,0	34,0	36,0	25,0	30,0	20	-	-	-	-	

*Reduced sealing / Guarnizione ridotta

Dimension in millimeters



SIB-TEC EMC Cable Gland Serracavi **SIB-TEC EMC**

IP PROTECTION:

IP 68

OPERATING

TEMPERATURE:

-40 °C / +100 °C

SPECIAL FEATURES:

 SWB

- For Single Wire Braid
- Short & long thread
- Reduced sealing available (RED*)
- O-ring included

MATERIAL:

- Nickel-plated brass
- Available in stainless steel 316L
- Sealing: neoprene
- O-ring: nitrile
- Insert: PA6

THREAD:

Metric, PG

CERTIFICATION:

IEC 62 444

ACCESSORIES AVAILABLE:

See page accessories

INDICE DI PROTEZIONE:

IP 68

INTERVALLO DI

TEMPERATURA:

-40 °C / +100 °C

VANTAGGI TECNICI:

 SWB

- Per cavo schermato
- Filettatura corta e lunga
- Disponibili guarnizioni ridotte (RED*)
- Guarnizione inclusa

MATERIALE:

- Ottone nichelato
- Disponibile in inox 316L
- Rivestimento: neoprene
- O-ring: nitrile
- Inserto: PA6

FILETTATURA:

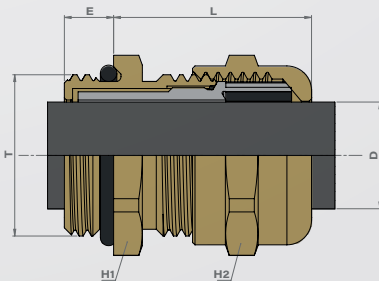
Metrica, PG

CERTIFICAZIONE:

IEC 62 444

ACCESSORI DISPONIBILI:

Consultare la pagina degli accessori



	Thread (T)	Part Number	Overall cable diameter (D)		H1	H2	E	L	Packing		Thread (T)	Part Number	E	Packing
			Min	Max										
Metric Short	12	C5212100	2,5	6,5	14,0	14,0	5,0	20,0	50	Metric Long	12	C5312100	15,0	50
	16	C5216100	4,0	9,5	17,0	17,0	5,0	23,0	50		16	C5316100	15,0	50
	20	C5220100	7,0	13,0	22,0	22,0	6,0	26,0	50		20	C5320100	15,0	50
	25	C5225100	8,0	16,0	27,0	27,0	7,0	28,0	25		25	C5325100	15,0	25
	32	C5232100	11,0	21,0	34,0	34,0	8,0	30,0	20		32	C5332100	15,0	20
	40	C5240100	15,0	27,0	42,0	42,0	8,0	33,0	10		40	C5340100	15,0	10
	50	C5250100	22,0	35,0	55,0	55,0	9,0	37,0	5		50	C5350100	15,0	5
63	C5263100	35,0	48,0	65,0	65,0	10,0	44,0	5	63	C5363100	15,0	5		
Metric Short RED*	12	C5212140	1,5	5,0	14,0	14,0	5,0	20,0	50	Metric Long RED*	12	C5312140	15,0	50
	16	C5216140	2,5	7,0	17,0	17,0	5,0	23,0	50		16	C5316140	15,0	50
	20	C5220140	4,0	10,0	22,0	22,0	6,0	26,0	50		20	C5320140	15,0	50
	25	C5225140	5,0	13,0	27,0	27,0	7,0	28,0	25		25	C5325140	15,0	25
	32	C5232140	7,0	17,0	34,0	34,0	8,0	30,0	20		32	C5332140	15,0	20
	40	C5240140	10,0	22,0	42,0	42,0	8,0	33,0	10		40	C5340140	15,0	10
	50	C5250140	17,0	29,0	55,0	55,0	9,0	37,0	5		50	C5350140	15,0	5
63	C5263140	28,0	40,0	65,0	65,0	10,0	44,0	5	63	C5363140	15,0	5		
PG Short	07	C5007100	2,5	6,5	14,0	14,0	5,0	20,0	50		-	-	-	-
	09	C5009100	4,0	9,5	17,0	17,0	6,0	23,0	50		-	-	-	-
	11	C5011100	6,0	11,5	20,0	20,0	6,0	24,0	50		-	-	-	-
	13	C5013100	7,0	13,0	22,0	22,0	6,5	26,0	50		-	-	-	-
	16	C5016100	8,0	15,0	24,0	24,0	6,5	27,5	50		-	-	-	-
	21	C5021100	11,0	19,0	30,0	30,0	7,0	28,0	20		-	-	-	-
	29	C5029100	16,0	26,0	40,0	40,0	8,0	30,0	20		-	-	-	-
	36	C5036100	22,0	34,5	50,0	50,0	9,0	38,0	20		-	-	-	-
	42	C5042100	27,0	40,0	58,0	58,0	10,0	40,0	5		-	-	-	-
	48	C5048100	35,0	48,0	65,0	65,0	10,0	44,0	5		-	-	-	-
48DIN	C5049100	35,0	48,0	65,0	65,0	10,0	44,0	5	-	-	-	-		
PG Short RED*	07	C5007140	1,5	5,0	14,0	14,0	5,0	20,0	50		-	-	-	-
	09	C5009140	2,5	7,0	17,0	17,0	6,0	23,0	50		-	-	-	-
	11	C5011140	3,0	8,5	20,0	20,0	6,0	24,0	50		-	-	-	-
	13	C5013140	4,0	10,0	22,0	22,0	6,5	26,0	50		-	-	-	-
	16	C5016140	5,0	12,0	24,0	24,0	6,5	27,5	50		-	-	-	-
	21	C5021140	8,0	16,0	30,0	30,0	7,0	28,0	20		-	-	-	-
	29	C5029140	11,0	21,0	40,0	40,0	8,0	30,0	20		-	-	-	-
	36	C5036140	16,0	28,0	50,0	50,0	9,0	38,0	20		-	-	-	-
	42	C5042140	22,0	34,0	58,0	58,0	10,0	40,0	5		-	-	-	-
	48	C5048140	28,0	40,0	65,0	65,0	10,0	44,0	5		-	-	-	-
48DIN	C5049140	28,0	40,0	65,0	65,0	10,0	44,0	5	-	-	-	-		



SIB-TEC UL / VDE / NEMA 4X Cable Gland


Serracavi SIB-TEC UL / VDE / NEMA 4X



IP PROTECTION:
IP 66/68 - NEMA 4X

OPERATING TEMPERATURE:
-40 °C / +100 °C

SPECIAL FEATURES:

-  SWB
- For Single Wire Braid
 - Short & long thread
 - Reduced sealing available (RED*)
 - O-ring included

- MATERIAL:**
- Nickel-plated brass
 - Available in stainless steel 316L
 - Sealing: EPDM
 - O-ring: nitrile
 - Insert: PA6

THREAD:
Metric, PG, NPT


CERTIFICATION:
IEC 62 444

ACCESSORIES AVAILABLE:
See page accessories

INDICE DI PROTEZIONE:
IP 66/68 - NEMA 4X

INTERVALLO DI TEMPERATURA:
-40 °C / +100 °C

VANTAGGI TECNICI:

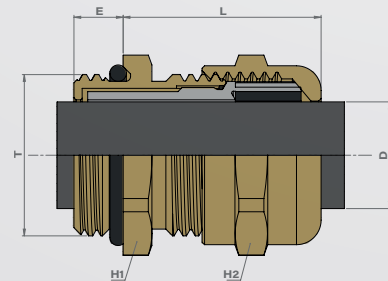
-  SWB
- Per cavo intrecciato
 - Filettatura corta e lunga
 - Disponibili guarnizioni ridotte (RED*)
 - Guarnizione inclusa

- MATERIALE:**
- Ottone nichelato
 - Disponibile in inox 316L
 - Rivestimento: EPDM
 - O-ring: nitrile
 - Inserto: PA6

FILETTATURA:
Metrica, PG, NPT

CERTIFICAZIONE:
IEC 62 444

ACCESSORI DISPONIBILI:
Consultare la pagina degli accessori



	Thread (T)	Part Number	Overall cable diameter (D)		H1	H2	E	L	Packing		Thread (T)	Part Number	E	Packing
			Min	Max										
Metric Short	12	110020301	2,5	6,5	14,0	14,0	5,0	20,0	50	Metric Long	12	110020317	15,0	50
	16	110020302	4,0	9,5	17,0	17,0	5,0	23,0	50		16	110020318	15,0	50
	20	110020303	7,0	13,0	22,0	22,0	6,0	26,0	50		20	110020319	15,0	50
	25	110020304	8,0	16,0	27,0	27,0	7,0	28,0	25		25	110020320	15,0	25
	32	110020305	11,0	21,0	34,0	34,0	8,0	30,0	20		32	110020321	15,0	20
	40	110020306	15,0	27,0	42,0	42,0	8,0	33,0	10		40	110020322	15,0	10
	50	110020307	22,0	35,0	55,0	55,0	9,0	37,0	5		50	110020323	15,0	5
	63	110020308	35,0	48,0	65,0	65,0	10,0	44,0	5	63	110020324	15,0	5	
Metric Short RED*	12	110020309	1,5	5,0	14,0	14,0	5,0	20,0	50	Metric Long RED*	12	110020325	15,0	50
	16	110020310	2,5	7,0	17,0	17,0	5,0	23,0	50		16	110020326	15,0	50
	20	110020311	4,0	10,0	22,0	22,0	6,0	26,0	50		20	110020327	15,0	50
	25	110020312	5,0	13,0	27,0	27,0	7,0	28,0	25		25	110020328	15,0	25
	32	110020313	7,0	17,0	34,0	34,0	8,0	30,0	20		32	110020329	15,0	20
	40	110020314	10,0	22,0	42,0	42,0	8,0	33,0	10		40	110020330	15,0	10
	50	110020315	17,0	29,0	55,0	55,0	9,0	37,0	5		50	110020331	15,0	5
	63	110020316	28,0	40,0	65,0	65,0	10,0	44,0	5	63	110020332	15,0	5	
NPT	3/8"	110020429	4,0	9,5	17,0	18,0	15,0	23,0	50		-	-	-	-
	1/2"	110020430	7,0	13,0	22,0	23,0	20,0	26,0	50		-	-	-	-
	3/4"	110020431	8,0	16,0	27,0	28,0	20,0	28,0	20		-	-	-	-
	1"	110020432	11,0	21,0	34,0	36,0	25,0	30,0	20		-	-	-	-
NPT RED*	3/8"	110020433	2,5	7,0	17,0	18,0	15,0	23,0	50		-	-	-	-
	1/2"	110020434	4,0	10,0	22,0	23,0	20,0	26,0	50		-	-	-	-
	3/4"	110020435	5,0	13,0	27,0	28,0	20,0	28,0	20		-	-	-	-
	1"	110020436	7,0	17,0	34,0	36,0	25,0	30,0	20		-	-	-	-

*Reduced sealing / Guarnizione ridotta



SIB-TEC EMC CAGE 360° Cable Gland

Serracavi **SIB-TEC CAGE EMC 360°**

IP PROTECTION:
IP 65 – NEMA 4X

OPERATING TEMPERATURE:
-40 °C / +100 °C

SPECIAL FEATURES:

- For Single Wire Braid, Short & long thread
- Reduced sealing available (RED*)
- O-ring included
- Additional EMC device 360°

- MATERIAL:**
- Nickel-plated brass
 - Available in stainless steel 316L
 - Sealing: EPDM
 - O-ring: nitrile
 - Insert: PA6

THREAD:
Metric

CERTIFICATION:
• IEC 62 444

ACCESSORIES AVAILABLE:
See page accessories

INDICE DI PROTEZIONE:
IP 65 – NEMA 4X

INTERVALLO DI TEMPERATURA:
-40 °C / +100 °C

VANTAGGI TECNICI:

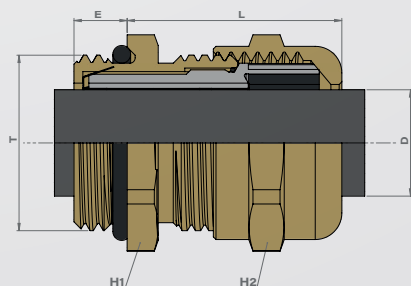
- Per cavo schermato
- Filettatura corta e lunga
- Disponibili guarnizioni ridotte (RED*)
- Guarnizione inclusa

- MATERIALE:**
- Ottone nichelato
 - Disponibile in inox 316L
 - Rivestimento: EPDM
 - O-ring: nitrile
 - Inserto: PA6

FILETTATURA:
Metrica

CERTIFICAZIONE:
• IEC 62 444

ACCESSORI DISPONIBILI:
Consultare la pagina degli accessori



	Thread (T)	Part Number	Overall cable diameter (D)		H1	H2	E	L	Packing		Thread (T)	Part Number	E	Packing
			Min	Max										
Metric Short	16	C5216200	4,0	9,5	17,0	17,0	5,0	23,0	50	Metric Long	16	C5316200	15,0	50
	20	C5220200	7,0	13,0	22,0	22,0	6,0	26,0	50		20	C5320200	15,0	50
	25	C5225200	8,0	16,0	27,0	27,0	7,0	28,0	25		25	C5325200	15,0	25
	32	C5232200	11,0	21,0	34,0	34,0	8,0	30,0	20		32	C5332200	15,0	20
	40	C5240200	15,0	27,0	42,0	42,0	8,0	33,0	10		40	C5340200	15,0	10
	50	C5250200	22,0	35,0	55,0	55,0	9,0	37,0	5		50	C5350200	15,0	5
	63	C5263200	35,0	48,0	65,0	65,0	10,0	44,0	5	63	C5363200	15,0	5	
Metric Short RED*	16	C5216240	2,5	7,0	17,0	17,0	5,0	23,0	50	Metric Long RED*	16	C5316240	15,0	50
	20	C5220240	4,0	10,0	22,0	22,0	6,0	26,0	50		20	C5320240	15,0	50
	25	C5225240	5,0	13,0	27,0	27,0	7,0	28,0	20		25	C5325240	15,0	20
	32	C5232240	7,0	17,0	34,0	34,0	8,0	30,0	20		32	C5332240	15,0	20
	40	C5240240	10,0	22,0	42,0	42,0	8,0	33,0	10		40	C5340240	15,0	10
	50	C5250240	17,0	29,0	55,0	55,0	9,0	37,0	5		50	C5350240	15,0	5
	63	C5263240	28,0	40,0	65,0	65,0	10,0	44,0	5	63	C5363240	15,0	5	

*Reduced sealing / Guarnizione ridotta



SIB-TEC LF Cable Gland + locknuts

Serracavi SIB-TEC LF + controdadi



IP PROTECTION:
IP 66/68 - NEMA 4X

OPERATING TEMPERATURE:
-40 °C / +100 °C

SPECIAL FEATURES:



- For Single Wire braid
- Short & long thread (on request)
- Reduced sealing available (RED*)
- O-ring included

MATERIAL:

- Nickel-plated Lead Free: CW 510L
- Sealing: EPDM
- O-ring: nitrile
- Insert: PA6

THREAD:
Metric, PG, NPT

CERTIFICATION:
IEC 62 444

ACCESSORIES AVAILABLE:
See page accessories

INDICE DI PROTEZIONE:
IP 66/68 - NEMA 4X

INTERVALLO DI TEMPERATURA:
-40 °C / +100 °C

VANTAGGI TECNICI:

- Per cavo schermato
- Filettatura corta e lunga (su richiesta)
- Disponibili guarnizioni ridotte (RED*)
- Guarnizione inclusa

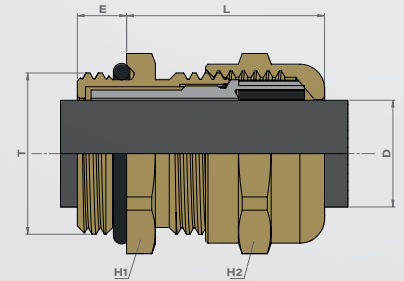
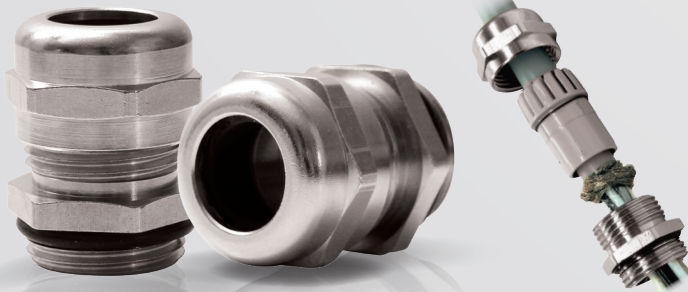
MATERIALE:

- Ottone nichelato senza piombo: CW 510L
- Rivestimento: EPDM
- O-ring: nitrile
- Inserto: PA6

FILETTATURA:
Metrica, PG, NPT

CERTIFICAZIONE:
IEC 62 444

ACCESSORI DISPONIBILI:
Consultare la pagina degli accessori



SIB-TEC LF

	Thread (T)	Part Number	Overall cable diameter (D)		H1	H2	E	L	Packing
			Min	Max					
Metric Short	12	110020501	2,5	6,5	14,0	14,0	5,0	20,0	50
	16	110020502	4,0	9,5	17,0	17,0	5,0	23,0	50
	20	110020503	7,0	13,0	22,0	22,0	6,0	26,0	50
	25	110020504	8,0	16,0	27,0	27,0	7,0	28,0	25
	32	110020505	11,0	21,0	34,0	34,0	8,0	30,0	20
	40	110020506	15,0	27,0	42,0	42,0	8,0	33,0	10
	50	110020507	22,0	35,0	55,0	55,0	9,0	37,0	5
Metric Short RED*	63	110020508	35,0	48,0	65,0	65,0	10,0	44,0	5
	12	110020509	1,5	5,0	14,0	14,0	5,0	20,0	50
	16	110020510	2,5	7,0	17,0	17,0	5,0	23,0	50
	20	110020511	4,0	10,0	22,0	22,0	6,0	26,0	50
	25	110020512	5,0	13,0	27,0	27,0	7,0	28,0	25
	32	110020513	7,0	17,0	34,0	34,0	8,0	30,0	20
	40	110020514	10,0	22,0	42,0	42,0	8,0	33,0	10
50	110020515	17,0	29,0	55,0	55,0	9,0	37,0	5	
63	110020516	28,0	40,0	65,0	65,0	10,0	44,0	5	



LOCKNUTS LF

	Thread (T)	Part Number	H	E	Packing
Metric	12	120010038	15,0	3,0	50
	16	120010039	20,0	3,0	50
	20	120010040	24,0	3,5	50
	25	120010041	30,0	3,5	25
	32	120010042	35,0	4,5	20
	40	120010043	45,0	4,5	20
	50	120010044	55,0	5,5	10
63	120010045	70,0	6,0	5	



BRASS LEAD FREE

La direttiva europea **RoHS** 2011/65/UE comunemente nota come **RoHS** si sta evolvendo. Da luglio 2021 entreranno in vigore nuove limitazioni sulle sostanze. Il rispetto dell'ambiente e degli standard internazionali resta la nostra priorità. In accordo con l'evoluzione della direttiva **RoHS**, SIB si adegua al mercato proponendo serie di pressacavi e accessori per il mercato senza piombo (meno dello 0,1%).

I pressacavi in ottone attualmente prodotti contengono dall'1,5 al 3,5% di piombo, in conformità con la direttiva **RoHS** (il 4% corrisponde alla quantità massima tollerata).

In qualità di produttore di pressacavi dal 1922, SIB si impegna a garantire qualità e durata.

SIB controlla l'intero processo di sviluppo e produzione dei suoi prodotti, nonché l'approvvigionamento delle materie prime.

Assicura inoltre che il cambio di lega non influenzerà le prestazioni e le dimensioni dei prodotti.

The ROHS European directive 2011/65/UE commonly called **RoHS** is evolving. From July 2021 some new substance restrictions will come into force.

Respect for the environment and compliance with international standards is our duty and our priority.

According to the evolution of the **RoHS** Directive, SIB offers to the market lead-free cable-glands and accessories (less than 0.1% lead).

The brass cable-glands which SIB manufactures in accordance with the current **RoHS** directive contain from 1.5 to 3.5 % lead (4% being the maximum amount tolerated).

Manufacturer of cable-glands since 1922, SIB is committed to quality and sustainability. SIB controls the entire development and manufacturing process of its products, as well as the supply of raw materials. We have been studying for several months the introduction of new lead-free material, and its machining in our factory. The results are very positive.

SIB confirms that the change of alloy will have no impact on the performance, size of the products.

RoHS





WADI-MAX Cable Gland Serracavi WADI-MAX



IP PROTECTION:

IP 66/68/69K

OPERATING TEMPERATURE:

- Neoprene: -40 °C / +100 °C
- Silicone: -60 °C / +160 °C
- Viton: -20 °C / +200 °C (for different kind of applications: Hydrocarbons, oil, acid resistant)

SPECIAL FEATURES:

- M72 thread available
- Large range (M12 to M110)
- Extra-large clamping range (from 4 to 89 mm)
- Increased strain relief
- O-ring on entry thread
- Anti-twisting ring
- EMC: available soon

MATERIAL:

- Nickel-plated brass
- Brass (on request)
- Available in stainless steel 316L

THREAD:

- NPT from 1/4" to 3" 1/2
- ISO from M12 to M110
- Short & long thread
- Other thread on request

CERTIFICATION:

- IEC 62 444

ACCESSORIES AVAILABLE:

See page accessories

INDICE DI PROTEZIONE:

IP 66/68/69K

INTERVALLO DI TEMPERATURA:

- Neoprene: -40 °C / +100 °C
- Silicone: -60 °C / +160 °C
- Viton: -20 °C / +200 °C (per diverse tipologie di applicazioni: resistenza a idrocarburi/oli/acidi)

VANTAGGI TECNICI:

- Disponibile filettatura M72
- Grandi misure (M12-M110)
- Ampia capacità di serraggio (da 4 a 93 mm)
- Resistenza alla trazione rinforzata
- O-ring sulla filettatura di ingresso
- Anello antirotazione
- EMC: presto disponibile

MATERIALE:

- Ottone nichelato
- Ottone grezzo (su richiesta)
- Disponibile in inox 316L

FILETTATURA:

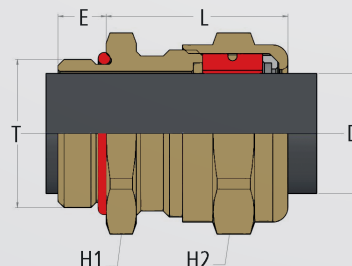
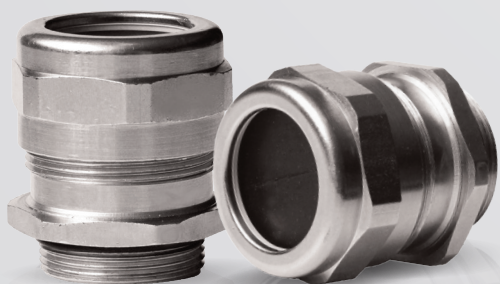
- NPT da 1/4" a 3" 1/2
- ISO da M12 a M110
- Filettatura corta e lunga
- Altre filettature su richiesta

CERTIFICAZIONE:

- IEC 62 444

ACCESSORI DISPONIBILI:

Consultare la pagina degli accessori



Thread (T)	Part Number			Overall cable diameter (D)				H1	H2	E	L	Packing
	Neoprene (N)	Viton (V)	Silicone (Sil)	Min N/V	Max N/V	Min Sil	Max Sil					
12	C1504112	C1504912	C1504913	4,0	8,0	4,0	8,0	17,0	17,0	7,0	28,0	25
16	C1504116	C1504916	C1504917	4,0	8,0	4,0	8,0	20,0	17,0	7,0	28,0	25
16	C1505116	C1505916	C1505917	7,0	12,0	7,0	12,0	20,0	20,0	7,0	26,0	25
20	C1506120	C1506920	C1506921	9,0	16,0	11,0	16,0	24,0	24,0	7,0	27,0	25
25	C1506125	C1506925	C1506926	9,0	16,0	11,0	16,0	30,0	24,0	8,0	27,0	10
25	C1507125	C1507925	C1507926	13,0	20,5	15,0	20,5	30,0	30,0	8,0	30,0	10
32	C1507133	C1507932	C1507933	13,0	21,0	15,0	21,0	36,0	30,0	8,5	30,0	10
32	C1508132	C1508932	C1508933	16,0	27,0	19,5	27,0	40,0	40,0	8,5	39,0	10
40	C1509140	C1509940	C1509941	21,0	34,0	25,0	33,0	48,0	48,0	8,5	42,0	10
50	C1510150	C1510950	C1510951	28,0	41,0	32,5	40,0	55,0	55,0	9,5	46,0	5
63	C1511163	C1511963	C1511964	34,0	47,5	38,0	47,5	68,0	64,0	10,5	47,0	5
63	C1512163	C1512963	C1512964	39,0	54,0	47,0	53,0	70,0	70,0	10,5	50,0	5
72	C1513172	C1513972	C1513973	48,0	65,0	51,0	64,0	85,0	85,0	11,5	62,0	1
75	C1513175	C1513975	C1513976	48,0	65,0	51,0	64,0	85,0	85,0	11,5	62,0	1
80	C1514180	C1514980	C1514981	55,0	71,0	62,0	71,0	95,0	95,0	12,0	65,0	1
90	C1515190	C1515990	C1515991	65,0	79,0	71,0	79,0	110,0	110,0	12,0	70,0	1
100	C1516199	C1516999	C1517999	74,0	89,0	78,0	89,0	120,0	120,0	12,0	71,0	1
110	C1517110	C1517910	C1517911	74,0	89,0	78,0	89,0	120,0	120,0	12,0	71,0	1

FOR NON-
ARMOURED
CABLES

BRASS

BOULAY® Cable Gland
Serracavi **BOULAY®****IP PROTECTION:**

IP 65

**OPERATING
TEMPERATURE:**

-25 °C / +120 °C

SPECIAL FEATURES:

- Short & long thread

MATERIAL:

Nickel-plated brass

THREAD:

Metric, PG

CERTIFICATION:

IEC 62 444

**ACCESSORIES
AVAILABLE:**

See page accessories

INDICE DI PROTEZIONE:

IP 65

**INTERVALLO DI
TEMPERATURA:**

-25 °C / +120 °C

VANTAGGI TECNICI:

- Filettatura corta e lunga

MATERIALE:

Ottone nichelato

FILETTATURA:

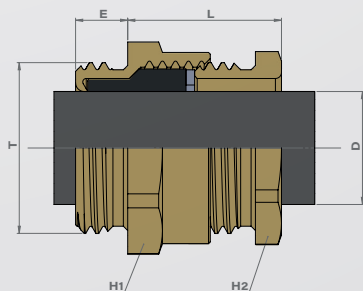
Metrica, PG

CERTIFICAZIONE:

IEC 62 444

**ACCESSORI
DISPONIBILI:**

Consultare la pagina degli accessori



	Thread (T)	Part Number	Overall cable diameter (D)		H1	H2	E	L	Packing		Thread (T)	Part Number	E	Packing
			Min	Max										
Metric Short	12	C1212000	3,0	6,0	14,0	13,0	5,0	13,0	50	Metric Long	12	C1212110	15,0	50
	16	C1216000	4,5	9,0	18,0	16,0	6,0	15,5	50		16	C1216110	15,0	50
	20	C1220000	8,0	13,0	22,0	20,0	6,0	17,5	50		20	C1220110	15,0	50
	25	C1225000	11,0	17,0	27,0	25,0	7,0	17,5	50		25	C1225110	15,0	50
	32	C1232000	16,0	23,0	34,0	32,0	7,0	17,5	20		32	C1232110	15,0	20
	40	C1240000	20,0	29,0	42,0	40,0	8,0	24,0	20		40	C1240110	15,0	20
	50	C1250000	28,0	38,0	52,0	50,0	10,0	25,0	5		50	C1250110	15,0	5
63	C1263000	37,0	50,0	65,0	64,0	12,0	32,0	5	63	C1263110	15,0	5		
PG Short	07	C0007108	3,0	6,0	14,0	13,0	5,0	14,0	50	PG Long	07	C0107100	15,0	50
	09	C0009102	6,5	8,5	17,0	15,0	5,0	11,0	50		09	C0109109	15,0	50
	11	C0011105	8,0	11,0	20,0	18,0	6,0	12,0	50		11	C0111102	15,0	50
	13	C0013109	9,5	12,0	22,0	20,0	6,0	13,0	50		13	C0113106	15,0	50
	16	C0016100	10,0	14,0	24,0	22,0	6,0	15,0	50		16	C0116107	15,0	50
	21	C0021104	13,0	19,0	30,0	28,0	7,0	17,0	20		21	C0121101	15,0	20
	29	C0029100	17,0	24,0	39,0	37,0	8,0	21,0	20		29	C0129107	15,0	20
	36	C0036108	24,0	32,0	50,0	47,0	8,0	23,0	10		36	C0136105	15,0	10
	42	C0042109	30,0	37,0	58,0	54,0	10,0	25,0	5		42	C0142100	15,0	5
	48	C0048101	36,0	43,0	65,0	60,0	10,0	28,0	5		48	C0148108	15,0	5
48DIN	C0049108	36,0	43,0	65,0	60,0	10,0	28,0	5	48DIN	C0149105	15,0	5		



SIB-TEC Cable Gland Serracavi **SIB-TEC**



IP PROTECTION:
IP 68

OPERATING TEMPERATURE:
-40 °C / +100 °C

SPECIAL FEATURES:

- Short & long thread
- Reduced sealing available (RED*)

MATERIAL:
Polyamid V2

THREAD:
Metric, PG, NPT

CERTIFICATION:
IEC 62 444

ACCESSORIES AVAILABLE:
See page accessories

INDICE DI PROTEZIONE:
IP 68

INTERVALLO DI TEMPERATURA:
-40 °C / +100 °C

VANTAGGI TECNICI:

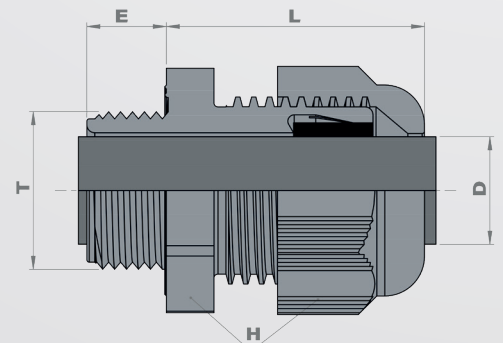
- Filettatura corta e lunga
- Disponibili guarnizioni ridotte (RED*)

MATERIALE:
Poliammide V2

FILETTATURA:
Metrica, PG, NPT

CERTIFICAZIONE:
IEC 62 444

ACCESSORI DISPONIBILI:
Consultare la pagina degli accessori



SIB-TEC SET Cable Gland Serracavi **SIB-TEC SET**



IP PROTECTION:
IP 68

OPERATING TEMPERATURE:
-40 °C / +100 °C

SPECIAL FEATURES:

- Short & long thread
- Reduced sealing available (RED*)
- Locknut and obturator mounted

MATERIAL:
Polyamid V2

THREAD:
Metric, PG, NPT

CERTIFICATION:
IEC 62 444

ACCESSORIES AVAILABLE:
See page accessories

INDICE DI PROTEZIONE:
IP 68

INTERVALLO DI TEMPERATURA:
-40 °C / +100 °C

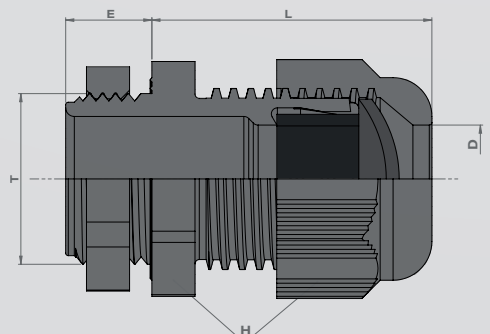
VANTAGGI TECNICI:

- Filettatura corta e lunga
- Disponibili guarnizioni ridotte (RED*)
- Dado e tappo in schiuma montati

FILETTATURA:
Metrica, PG, NPT

CERTIFICAZIONE:
IEC 62 444

ACCESSORI DISPONIBILI:
Consultare la pagina degli accessori



SIB-TEC PLASTIC

	Thread (T)	Part Number			Overall cable diameter (D)		H	E	L	Packing		Thread (T)	Part Number			E	Packing
		RAL7035	RAL7001	RAL9005	Min	Max							RAL7035	RAL7001	RAL9005		
Metric Short	12	F7021200	F7021209	F8021200	2,5	6,5	15,0	8,0	24,0	50	Metric Long	12	F7031200	F7031209	F8031200	15,0	50
	16 ¹	F7021650	F7021659	F8021650	2,5	8,0	19,0	10,0	27,0	50		16 ¹	F7031650	F7031659	F8031650	15,0	50
	16 ²	F7021600	F7021609	F8021600	3,5	10,0	22,0	10,0	29,0	50		16 ²	F7031600	F7031609	F8031600	15,0	50
	20 ¹	F7022050	F7022059	F8022050	7,0	12,0	24,0	10,0	30,0	50		20 ¹	F7032050	F7032059	F8032050	15,0	50
	20 ²	F7022000	F7022009	F8022000	8,0	14,0	27,0	10,0	33,0	50		20 ²	F7032000	F7032009	F8032000	15,0	50
	25 ¹	F7022550	F7022559	F8022550	8,0	14,0	27,0	10,0	35,0	50		25 ¹	F7032550	F7032559	F8032550	15,0	50
	25 ²	F7022500	F7022509	F8022500	9,0	18,0	33,0	10,0	39,0	25		25 ²	F7032500	F7032509	F8032500	15,0	25
	32	F7023200	F7023209	F8023200	14,0	25,0	42,0	10,0	42,0	20		32	F7033200	F7033209	F8033200	15,0	20
	40	F7024000	F7024009	F8024000	18,0	32,0	53,0	10,0	52,0	10		40	F7034000	F7034009	F8034000	16,0	10
	50	F7025000	F7025009	F8025000	24,0	38,5	60,0	12,0	55,0	5		50	F7035000	F7035009	F8035000	16,0	5
63	F7026300	F7026309	F8026300	35,0	48,0	70,0	12,0	56,0	5	63	F7036300	F7036309	F8036300	16,0	5		
Metric Short RED*	12	F7021240	F7021249	F8021240	1,5	5,0	15,0	8,0	24,0	50	Metric Long RED*	12	F7031240	F7031249	F8031240	15,0	50
	16 ¹	F7021660	F7021669	F8021660	1,5	6,0	19,0	10,0	27,0	50		16 ¹	F7031660	F7031669	F8031660	15,0	50
	16 ²	F7021640	F7021649	F8021640	2,0	7,0	22,0	10,0	29,0	50		16 ²	F7031640	F7031649	F8031640	15,0	50
	20 ¹	F7022060	F7022069	F8022060	3,0	9,0	24,0	10,0	30,0	50		20 ¹	F7032060	F7032069	F8032060	15,0	50
	20 ²	F7022040	F7022049	F8022040	5,0	12,0	27,0	10,0	33,0	50		20 ²	F7032040	F7032049	F8032040	15,0	50
	25 ¹	F7022560	F7022569	F8022560	5,0	12,0	27,0	10,0	35,0	50		25 ¹	F7032560	F7032569	F8032560	15,0	50
	25 ²	F7022540	F7022549	F8022540	7,0	16,0	33,0	10,0	39,0	25		25 ²	F7032540	F7032549	F8032540	15,0	25
	32	F7023240	F7023249	F8023240	11,0	21,0	42,0	10,0	42,0	20		32	F7033240	F7033249	F8033240	15,0	20
	40	F7024040	F7024049	F8024040	13,0	24,5	53,0	10,0	52,0	10		40	F7034040	F7034049	F8034040	16,0	10
	50	F7025040	F7025049	F8025040	17,0	31,0	60,0	12,0	55,0	5		50	F7035040	F7035049	F8035040	16,0	5
63	F7026340	F7026349	F8026340	26,0	39,0	70,0	12,0	56,0	5	63	F7036340	F7036349	F8036340	16,0	5		
NPT	3/8"	F7040800	F7040809	F8040800	2,5	8,0	19,0	11,0	27,0	50	-	-	-	-	-	-	
	1/2"	F7041200	F7041209	F8041200	5,0	12,0	24,0	14,0	30,0	50	-	-	-	-	-	-	
	3/4"	F7042000	F7042009	F8042000	9,0	18,0	33,0	15,0	39,0	20	-	-	-	-	-	-	
	1"	F7042800	F7042809	F8042800	14,0	25,0	42,0	18,0	42,0	20	-	-	-	-	-	-	
NPT RED*	3/8"	F7040840	F7040849	F8040840	1,5	6,0	19,0	11,0	27,0	50	-	-	-	-	-	-	
	1/2"	F7041240	F7041249	F8041240	3,0	9,0	24,0	14,0	30,0	50	-	-	-	-	-	-	
	3/4"	F7042040	F7042049	F8042040	7,0	16,0	33,0	15,0	39,0	20	-	-	-	-	-	-	
	1"	F7042840	F7042849	F8042840	11,0	21,0	42,0	18,0	42,0	20	-	-	-	-	-	-	
PG	07	F7000700	F7000709	F8000700	2,5	6,5	15,0	8,0	24,0	50	-	-	-	-	-	-	
	09	F7000900	F7000909	F8000900	2,5	8,0	19,0	8,0	27,0	50	-	-	-	-	-	-	
	11	F7001100	F7001109	F8001100	3,5	10,0	22,0	8,0	29,0	50	-	-	-	-	-	-	
	13	F7001300	F7001309	F8001300	5,0	12,0	24,0	9,0	30,0	50	-	-	-	-	-	-	
	16	F7001600	F7001609	F8001600	7,0	14,0	27,0	10,0	33,0	50	-	-	-	-	-	-	
	21	F7002100	F7002109	F8002100	9,0	18,0	33,0	11,0	39,0	25	-	-	-	-	-	-	
	29	F7002900	F7002909	F8002900	14,0	25,0	42,0	11,0	42,0	20	-	-	-	-	-	-	
	36	F7003600	F7003609	F8003600	18,0	32,0	53,0	13,0	50,0	10	-	-	-	-	-	-	
PG RED*	42	F7004200	F7004209	F8004200	24,0	38,5	60,0	13,0	55,0	5	-	-	-	-	-	-	
	48	F7004900	F7004909	F8004900	35,0	48,0	70,0	14,0	56,0	5	-	-	-	-	-	-	
	07	F7000740	F7000749	F8000740	1,5	5,0	15,0	8,0	24,0	50	-	-	-	-	-	-	
	09	F7000940	F7000949	F8000940	1,5	6,0	19,0	8,0	27,0	50	-	-	-	-	-	-	
	11	F7001140	F7001149	F8001140	2,0	7,0	22,0	8,0	29,0	50	-	-	-	-	-	-	
	13	F7001340	F7001349	F8001340	3,0	9,0	24,0	9,0	30,0	50	-	-	-	-	-	-	
	16	F7001640	F7001649	F8001640	5,0	12,0	27,0	10,0	33,0	50	-	-	-	-	-	-	
	21	F7002140	F7002149	F8002140	7,0	16,0	33,0	11,0	39,0	25	-	-	-	-	-	-	

SIB-TEC PLASTIC SET

*Reduced sealing / Guarnizione ridotta

	Thread (T)	Part Number		Overall cable diameter (D)		H	E	L	Packing
		RAL7035		Min	Max				
Metric	12	F7021205		2,5	6,5	15,0	8,0	24,0	50
	16 ²	F7021605		3,5	10,0	22,0	10,0	29,0	50
	20 ¹	F7022055		7,0	12,0	24,0	10,0	30,0	50
	20 ²	F7022005		8,0	14,0	27,0	10,0	33,0	50
	25 ²	F7022505		9,0	18,0	33,0	10,0	39,0	25
	32	F7023205		14,0	25,0	42,0	10,0	42,0	20
	40	F7024005		18,0	32,0	53,0	10,0	52,0	10
	50	F7025005		24,0	38,5	60,0	12,0	55,0	5
63	F7026305		35,0	48,0	70,0	12,0	56,0	5	
PG	07	F7000710		2,5	6,5	15,0	8,0	24,0	50
	09	F7000910		2,5	8,0	19,0	8,0	27,0	50
	11	F7001110		3,5	10,0	22,0	8,0	29,0	50
	13	F7001310		5,0	12,0	24,0	9,0	30,0	50
	16	F7001610		7,0	14,0	27,0	10,0	33,0	50
	21	F7002110		9,0	18,0	33,0	11,0	39,0	25
	29	F7002910		14,0	25,0	42,0	11,0	42,0	20
	36	F7003610		18,0	32,0	53,0	13,0	50,0	10
42	F7004210		24,0	38,5	60,0	13,0	55,0	5	
48	F7004910		35,0	48,0	70,0	14,0	56,0	5	

Other colors on request / Altri colori su richiesta

Dimension in millimeters

PLASTIC

UNIVERSAL
WITH
LAMELLASFOR NON-
ARMoured
CABLES

CLIP-TEC Cable Gland

Serracavi **CLIP-TEC**



IP PROTECTION:

IP 65

OPERATING TEMPERATURE:

-40 °C / +100 °C

SPECIAL FEATURES:

- Quick and easy to set up with a new clip system
- Perfect for installation in tight space or without back access
- No need a clamping range for the body
- Wider clamping range

- Tool free assembly
- Recommended for different wall thickness: 1,5 to 2,7 mm

MATERIAL:

- Body and cap nut: PA6
- Sealing: neoprene
- O-ring: nitrile

SIZES:

Ø16 - Ø20 - Ø25

CERTIFICATION:

IEC 62 444

INDICE DI PROTEZIONE:

IP 65

INTERVALLO DI TEMPERATURA:

-40 °C / +100 °C

VANTAGGI TECNICI:

- Installazione rapida grazie al sistema a clip
- Ideale per installazioni con accesso limitato o nessun accesso posteriore
- Nessuna coppia di serraggio richiesta per il corpo
- Intervallo di serraggio esteso

- Montaggio senza attrezzi
- Consigliato per spessori di parete da 1,5 a 2,7 mm

MATERIALE:

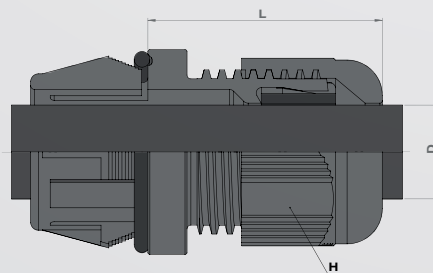
- Corpo e calotta: PA6
- Rivestimento: neoprene
- O-ring: nitrile

MISURE:

Ø16 - Ø20 - Ø25

CERTIFICAZIONE:

IEC 62 444



	Thread (T)	Part Number			Sealing	Overall cable diameter (D)		H	L	Packing
		RAL7035	RAL 7001	RAL 9005		Min	Max			
Metric equivalent	16	F7021612	F7021610	F8021605	Standard	3,5	10,0	22,0	29,0	50
	16	F7021641	F7021653	F8021641	Reduced	2,0	7,0	22,0	29,0	50
	20	F7022053	F7022061	F8022054	Standard	7,0	12,0	24,0	30,0	50
	20	F7022062	F7022070	F8022061	Reduced	3,0	9,0	24,0	30,0	50
	25	F7022506	F7022514	F8022503	Standard	9,0	18,0	33,0	39,0	25
	25	F7022541	F7022553	F8022541	Reduced	7,0	16,0	33,0	39,0	25

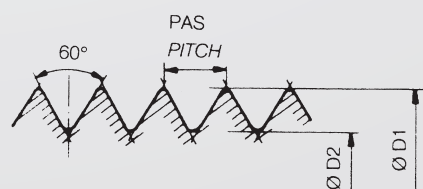


Protection degree according to DIN EN 60529

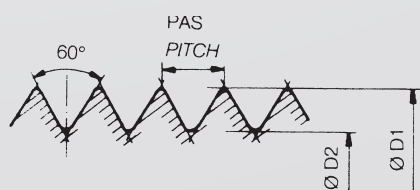
Grado di protezione in conformità con la norma DIN EN 60529

PRIMA CIFRA / FIRST INDEX Protezione dai corpi solidi / Protected against solid part			SECONDA CIFRA / SECOND INDEX Impermeabilità / Protection from water		
0		Nessuna protezione Not protected	0		Nessuna protezione Not protected
1		Protezione dai corpi solidi > 50 mm Protected against solid part > 50 mm	1		Protezione da gocce d'acqua che cadono verticalmente Protected against vertical drop fall
2		Protezione dai corpi solidi > 12 mm Protected against solid part > 12 mm	2		Protezione da gocce d'acqua inclinate a 15° Protected against drop fall at an angle of 15°
3		Protezione dai corpi solidi > 2,5 mm Protected against solid part > 2,5 mm	3		Protezione dalla pioggia fino a 60° dalla verticale Protected against rain up to an angle of 60°
4		Protezione dai corpi solidi > 1 mm Protected against solid part > 1 mm	4		Protezione dagli schizzi d'acqua da tutte le direzioni Protected against water projection from all directions
5		Protezione dalla polvere Protected against dust	5		Protezione da getti d'acqua da tutte le direzioni, con la lancia Protected against jet water projection from all directions
6		Protezione totale dalla polvere Entirely protected against dust	6		Protezione da getti d'acqua potenti od ondate Protected against powerful jet water
			7		Protezione dagli effetti dell'immersione tra 15 cm e 1 m Protected against immersion effect between 15 cm and 1 m
			8		Protezione dalle immersioni prolungate, in profondità e sotto pressione Protected against long time immersion in depth and under pressure
			9		Protezione dall'acqua sotto alta pressione/pulizia con getto di vapore Protected against water at high-pressure / Steam jet cleaning

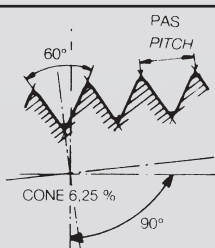
Metric thread to EN 60423
Filettatura metrica secondo
EN 6042360423



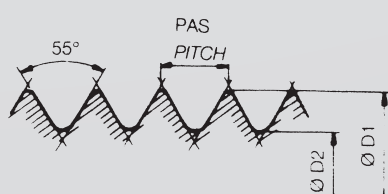
PG thread
Filettatura PG



NPT thread
Filettatura NPT



Gas pipe thread
Filettatura gas

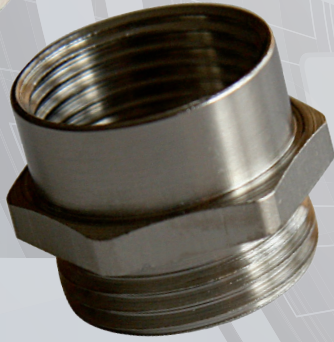


Metric	Pitch (mm)	Ø Outside diameter (mm)	Ø Core diameter (mm)	Clearance hole (mm)
10	1,0	10,0	9,0	10,5
12	1,5	12,0	10,5	12,5
16	1,5	16,0	14,5	16,5
20	1,5	20,0	18,5	20,5
25	1,5	25,0	23,5	25,5
32	1,5	32,0	30,5	32,5
40	1,5	40,0	38,5	40,5
50	1,5	50,0	48,5	50,5
63	1,5	63,0	61,5	63,3
75	1,5	75,0	73,5	75,5
80	2,0	80,0	78,0	80,5
90	2,0	90,0	88,0	90,5
100	2,0	100,0	98,0	100,5

PG	Pitch (mm)	Ø Outside diameter (mm)	Ø Core diameter (mm)	Clearance hole (mm)
7	1,270	12,5	11,28	12,7
9	1,410	15,2	13,86	15,4
11	1,410	18,6	17,26	18,8
13	1,410	20,4	19,06	20,7
16	1,410	22,5	21,16	22,8
21	1,587	28,3	26,78	28,6
29	1,587	37,0	35,48	37,4
36	1,587	47,0	45,48	47,5
42	1,587	54,0	52,48	54,5
48	1,588	59,3	57,78	59,8

NPT	Pas Pitch (mm)	Ø external gauge plan (mm)	Treads per inch
1/4	1,411	13,616	18
3/8	1,411	17,055	18
1/2	1,814	21,223	14
3/4	1,814	26,568	14
1"	2,208	33,227	11 1/2
1" 1/4	2,208	41,984	11 1/2
1" 1/2	2,208	48,053	11 1/2
2"	2,208	60,091	11 1/2
2" 1/2	3,175	72,699	8
3"	3,175	88,608	8
3" 1/2	3,175	100,013	8

BSP	Pitch (mm)	Ø Outside diameter (mm)	Ø Core diameter (mm)	Clearance hole (mm)
1/4	1,337	13,157	11,145	13,4
3/8	1,337	16,662	14,950	17,0
1/2	1,814	20,955	18,631	21,3
5/8	1,814	22,911	20,587	23,3
3/4	1,814	26,441	24,117	26,8
1"	2,309	33,249	30,291	33,7
1" 1/4	2,309	41,910	38,952	42,4
1" 1/2	2,309	47,803	44,845	48,3
2"	2,309	59,614	56,656	60,2
2" 1/2	2,309	75,184	72,226	75,7
3"	2,309	87,884	84,926	88,5
3" 1/2	2,309	100,330	97,372	101,0
4"	2,309	113,030	110,072	114,0



ACCESSORIES

→
ACCESSORI



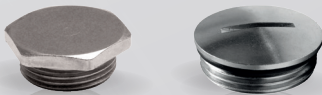
LOCKNUTS
CONTRODADI
p. 18



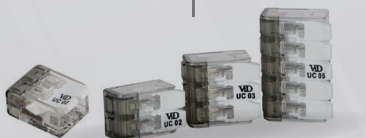
LOCKNUTS
CONTRODADI
p. 19



ROUND & HEXAGONAL PLUGS
TAPPI ROTONDI ED ESAGONALI
p. 20



ROUND & HEXAGONAL PLUGS
TAPPI ROTONDI ED ESAGONALI
p. 21



SCREWLESS CONNECTORS
CONNETTORI VOLANTI
p. 22



MODULO SIB
p. 22



PASSE-SIB
p. 23

BRASS

PLASTIC

EMC
TESTED

HALOGEN
FREE



SPECIFICATIONS / SPECIFICHE p. 15

LOCKNUTS CONTRODADI

OPERATING

TEMPERATURE:

Polyamid glassfiber 25%
reinforced:
-30 °C / +120 °C

MATERIAL:

- Polyamid, PA6
- Available in stainless steel 316L

THREAD:

Metric, PG, NPT

INTERVALLO DI

TEMPERATURA:

Poliammide 6 caricata con
il 25% di fibra di vetro:
-30 °C / +120 °C

MATERIALE:

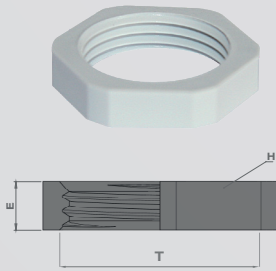
- Poliammide, PA6
- Disponibile in inox 316L

FILETTATURA:

Metrica, PG, NPT

	Thread (T)	Part Number			H	E	Packing
		RAL7001	RAL7035	RAL9005			
Metric	12	G4312005	G4312010	H4312110	19,0	5,0	50
	16	G4316005	G4316010	H4316110	22,0	5,0	50
	20	G4320005	G4320010	H4320110	24,0	5,0	50
	25	G4325005	G4325010	H4325110	30,0	6,0	50
	32	G4332005	G4332010	H4332110	38,0	7,5	50
	40	G4340005	G4340010	H4340110	50,0	8,0	20
	50	G4350005	G4350010	H4350110	60,0	9,0	10
	63	G4363005	G4363010	H4363110	75,0	10,0	5
PG	07	G4107002	G4107010	H4107002	15,0	5,0	50
	09	G4109006	G4109010	H4109006	19,0	5,0	50
	11	G4111009	G4111010	H4111009	22,0	5,0	50
	13	G4113003	G4113010	H4113003	24,0	5,0	50
	16	G4116004	G4116010	H4116004	27,0	6,0	50
	21	G4121008	G4121010	H4121008	32,0	6,5	25
	29	G4129004	G4129010	H4129004	41,0	7,5	20
PG Old DIN 46320	07	G4107104	G4107110	H4107104	19,0	5,0	50
	09	G4109108	G4109110	H4109108	22,0	5,0	50
	11	G4111101	G4111110	H4111101	24,0	5,0	50
	13	G4113105	G4113110	H4113105	27,0	6,0	50
	16	G4116106	G4116110	H4116106	30,0	6,0	50
	21	G4121100	G4121110	H4121100	36,0	6,5	25
	29	G4129100	G4129110	H4129100	46,0	7,5	20
	36*	G4136100	G4136110	H4136100	60,0	8,0	10
	42*	G4142000	G4142010	H4142000	65,0	9,0	5
	48*	G4149000	G4149010	H4149000	70,0	9,5	5
NPT	3/8" NPT	G4308201	G4308211	G4308221	22,0	5,0	50
	1/2" NPT	G4312201	G4312211	G4312221	27,0	6,0	50
	3/4" NPT	G4320201	G4320211	G4320221	36,0	6,5	25
	1" NPT	G4328201	G4328211	G4328221	41,0	7,5	20

* Temperature (polyamid): - 40 °C/ +100 °C / Temperatura (poliammide) : - 40/+100 °C



BRASS

LOCKNUTS / NOTCHED LOCKNUTS CONTRODADI / CONTRODADI DENTATI

SPECIAL FEATURES:
Notched locknuts for EMC application

THREAD:
Metric, PG, NPT

VANTAGGI TECNICI:
Controdadi dentati per applicazione EMC

FILETTATURA:
Metrica, PG, NPT

MATERIAL:

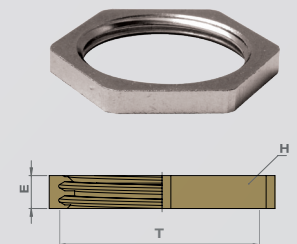
- Nickel-plated brass
- Available in stainless steel 316L

MATERIALE:

- Ottone nichelato
- Disponibile in inox 316L

LOCKNUTS / CONTRODADI

	Thread (T)	Part Number	H	E	Packing
Metric	12	D4312109	15,0	3,0	50
	16	D4316107	20,0	3,0	50
	20	D4320104	24,0	3,5	50
	25	D4325109	30,0	3,5	25
	32	D4332107	35,0	4,5	20
	40	D4340102	45,0	4,5	10
	50	D4350101	55,0	5,5	5
	63	D4363101	70,0	6,0	5
	75	D4375104	80,0	8,0	5
	80	D4380100	90,0	10,0	5
	90	D4390100	100,0	12,0	5
100	D4399100	110,0	12,0	5	
110	D4311100	125,0	15,0	1	
PG	07	D4007104	15,0	2,9	50
	09 DIN*	D4009108	18,0	2,9	50
	11	D4011101	21,0	3,1	50
	13	D4013105	23,0	3,1	50
	16	D4016106	26,0	3,1	50
	21	D4021100	32,0	3,6	20
	29	D4029106	41,0	4,1	20
	36	D4036104	51,0	5,1	10
	42	D4042105	60,0	5,1	5
NPT	1/8"	D4204200	15,0	2,0	50
	1/4"	D4206200	17,0	2,8	50
	3/8"	D4208200	20,0	3,0	50
	1/2"	D4212200	24,0	4,0	50
	3/4"	D4220200	30,0	4,0	20
	1"	D4228200	36,0	5,0	20
	1"1/4	D4235200	46,0	5,0	20
	1"1/2	D4241200	55,0	5,5	5
	2"	D4247200	64,0	5,5	5
	2"1/2	D4248200	80,0	6,6	5
	3"	D4249200	100,0	7,0	5
4"	D4250200	120,0	7,0	5	



NOTCHED LOCKNUTS / CONTRODADI DENTATI

Metric	12	D3412100	15,0	3,0	50
	16	D3416100	19,0	3,0	50
	20	D3420100	24,0	3,5	50
	25	D3425100	30,0	3,5	25
	32	D3432100	35,0	4,5	20
	40	D3440100	45,0	4,5	10
	50	D3450100	55,0	5,5	5
	63	D3463100	70,0	6,0	5
PG	07	D4407100	15,0	2,9	50
	09 DIN*	D4409100	18,0	2,9	50
	11	D4411100	21,0	3,1	50
	13	D4413100	23,0	3,1	50
	16	D4416100	26,0	3,1	50
	21	D4421100	32,0	3,6	20
	29	D4429100	41,0	4,1	20
	36	D4436100	51,0	5,1	10
	42	D4442100	60,0	5,1	5
	48	D4449100	64,0	5,6	5



*Old DIN 46320

PLASTIC

HALOGEN
FREE

ROUND AND HEXAGONAL PLUGS TAPPI ROTONDI ED ESAGONALI

IP PROTECTION:

IP 65 (round) / IP 68
(hexagonal) without sealing

OPERATING**TEMPERATURE:**

-30 °C / +120 °C

SPECIAL FEATURES:

- Can be assembled with a screwdriver
- For round: IP 68 with flat seal

MATERIAL:

- Polyamid glassfiber 25 % reinforced (metric)
- Polycarbonat (PG)
- Available stainless steel 316L

THREAD:

Metric, PG

INDICE DI PROTEZIONE:

IP 65 (rotondo) / IP 68
(esagonale) senza giunto

INTERVALLO DI**TEMPERATURA:**

-30 °C / +120 °C

VANTAGGI TECNICI:

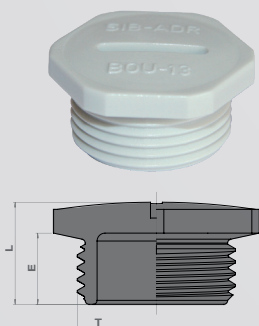
- Possibilità di montaggio con cacciavite
- Se rotondo: IP 68 con guarnizione piatta

MATERIALE:

- Poliammide 6 caricata con il 25% di fibra di vetro (metrico)
- Policarbonato (PG)
- Disponibile in inox 316L

FILETTATURA:

Metrica, PG

**HEXAGONAL PLUGS / TAPPI ESAGONALI**

	Thread (T)	Part Number		H	E	L	Packing
		RAL7035	RAL9005				
Metric	12	G4812210	G4812220	16,0	8,0	11,0	50
	16	G4816210	G4816220	20,0	8,0	12,0	50
	20	G4820210	G4820220	26,0	9,0	13,0	50
	25	G4825210	G4825220	32,0	10,0	15,0	20
	32	G4832210	G4832220	40,0	11,0	16,5	20
	40	G4840210	G4840220	48,0	12,0	18,0	20
	50	G4850210	G4850220	55,0	13,0	21,0	10
	63	G4863210	G4863220	70,0	15,0	24,5	5
PG	7	G4607007	H4607014	15,0	6,5	10,0	50
	9	G4609001	H4609018	19,0	7,0	10,5	50
	11	G4611004	H4611011	22,0	8,0	11,5	50
	13	G4613008	H4613015	24,0	9,0	12,5	50
	16	G4616009	H4616016	27,0	9,0	12,5	50
	21	G4621003	H4621010	32,0	10,0	14,5	25
	29	G4629009	H4629016	41,0	12,0	18,0	25
	36	G4636007	H4636014	55,0	14,0	21,5	10
42	G4642008	H4642015	60,0	15,5	24,0	10	
48	G4649007	H4649014	65,0	16,0	26,0	5	

ROUND PLUGS / TAPPI ROTONDI

	Thread (T)	Part Number			H	E	L	Packing
		RAL7001	RAL7035	RAL9005				
Metric	12	G4512200	G4512210	G4512220	16,0	6,0	8,0	50
	16	G4516200	G4516210	G4516220	20,0	6,0	8,0	50
	20	G4520200	G4520210	G4520220	26,0	8,0	10,5	50
	25	G4525200	G4525210	G4525220	32,0	8,0	11,0	50
	32	G4532200	G4532210	G4532220	40,0	10,0	13,5	20
	40	G4540200	G4540210	G4540220	48,0	10,0	14,0	20
	50	G4550200	G4550210	G4550220	55,0	12,0	17,0	10
	63	G4563200	G4563210	G4563220	70,0	12,0	18,0	5
PG	07	N8307002	N8307010		15,0	6,0	8,0	100
	09	N8309006	N8309010		18,5	6,0	8,0	100
	11	N8311009	N8311011		22,0	6,0	9,0	100
	13	N8313003	N8313010		25,0	6,0	10,0	100
	16	N8316004	N8316010		27,0	6,0	10,0	100
	21	N8321008	N8321010		33,0	8,0	12,0	50
	29	N8329004	N8329010		44,0	8,0	12,0	50
	36	N8336002	N8336010		55,0	10,0	15,0	20
48	N8349002	N8349010		69,5	12,0	17,0	10	

ROUND AND HEXAGONAL PLUGS TAPPI ROTONDI ED ESAGONALI

IP PROTECTION:

IP 68

OPERATING TEMPERATURE:

-25 °C / +120 °C (nitrile)

-20 °C / +200 °C (viton)

-60 °C / +160 °C (silicon)

SPECIAL FEATURES:

- O-ring on entry thread
- Short/long thread (on request)
- Different material o-ring (nitrile/viton/silicon)

MATERIAL:

- Nickel-plated brass
- Available in stainless steel 316L

THREAD:

Metric, PG, NPT

INDICE DI PROTEZIONE:

IP 68

INTERVALLO DI TEMPERATURA:

-25 °C / +120 °C (nitrile)

-20 °C / +200 °C (viton)

-60 °C / +160 °C (silicone)

VANTAGGI TECNICI:

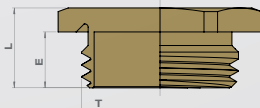
- O-ring sulla filettatura di ingresso
- Filettatura corta e lunga (su richiesta)
- O-ring in diversi materiali (nitrile/viton/silicone)

MATERIALE:

- Ottone nichelato
- Disponibile in inox 316L

FILETTATURA:

Metrica, PG, NPT



HEXAGONAL PLUGS TAPPI ESAGONALI

	Thread (T)	Part Number		H	E	L	Packing
		-	O-Ring				
Metric	12	D4812104	D4812110	14,0	7,0	10,0	50
	16	D4816102	D4816110	17,0	7,0	10,0	50
	20	D4820109	D4820110	23,0	7,0	10,0	50
	25	D4825104	D4825110	29,0	8,0	11,5	25
	32	D4832102	D4832110	39,0	8,5	12,5	10
	40	D4840107	D4840110	45,0	8,5	12,5	10
	50	D4850106	D4850110	58,0	9,5	14,5	10
	63	D4863106	D4863110	70,0	10,5	17,5	5
	75	D4875109	D4875110	80,0	11,5	19,5	1
PG	07	D4607106	D4607110	14,0	5,0	8,0	50
	09	D4609100	D4609110	17,0	6,0	9,0	50
	11	D4611103	D4611110	19,0	6,0	9,0	50
	13	D4613107	D4613110	21,0	6,5	9,5	50
	16	D4616108	D4616110	23,0	6,5	9,5	50
	21	D4621102	D4621110	29,0	7,0	11,0	20
	29	D4629108	D4629110	39,0	8,0	12,0	20
	36	D4636106	D4636110	50,0	9,0	14,0	10
	42	D4642107	D4642110	58,0	10,0	15,0	5
48	D4649106	D4649110	64,0	10,0	16,0	5	
NPT	1/4"	D4606104	-	15,0	15,0	18,0	50
	3/8"	D4608104	-	19,0	15,0	18,0	50
	1/2"	D4612104	-	23,0	20,0	23,0	50
	3/4"	D4620104	-	29,0	20,0	24,0	20
	1"	D4628104	-	36,0	25,0	29,0	20
	1 1/4"	D4635104	-	45,0	25,0	29,0	10
	1 1/2"	D4641104	-	50,0	26,0	31,0	1
	2"	D4647104	-	64,0	27,0	33,0	1
	2 1/2"	D4650104	-	80,0	40,0	48,0	1
	3"	D4660104	-	100,0	40,0	48,0	1
4"	D4680104	-	125,0	45,0	55,0	1	

ROUND PLUGS TAPPI ROTONDI

	Thread (T)	Part Number		H	E	L	Packing
		-	O-Ring				
Metric	12	D4912100	D4912110	14,0	5,0	7,0	50
	16	D4916100	D4916110	18,0	6,0	8,0	50
	20	D4920100	D4920110	22,0	6,5	8,5	50
	25	D4925100	D4925110	27,0	7,0	10,0	50
	32	D4932100	D4932110	34,0	8,0	11,0	50
	40	D4940100	D4940110	44,0	9,0	13,0	25
	50	D4950100	D4950110	54,0	10,0	14,5	25
	63	D4963100	D4963110	67,0	10,0	15,0	5
	75	D4975100	D4975110	79,0	11,0	16,0	1
PG	07	D4507210	D4507220	14,0	5,0	7,0	50
	09	D4509210	D4509220	17,0	6,0	8,0	50
	11	D4511210	D4511220	20,0	6,0	8,0	50
	13	D4513210	D4513220	22,0	6,5	8,5	50
	16	D4516210	D4516220	24,0	6,5	9,0	50
	21	D4521210	D4521220	30,0	7,0	10,0	25
	29	D4529210	D4529220	39,0	8,0	11,0	20
	36	D4536210	D4536220	50,0	9,0	14,0	10
	42	D4542210	D4542220	57,0	10,0	15,0	10
48	D4549210	D4549220	64,0	10,0	15,0	5	

PLASTIC

SCREWLESS CONNECTORS 2, 3 and 5 wires CONNETTORI VOLANTI 2, 3 e 5 fori



SPECIAL FEATURES:

- Adapted to solid and flexible wires, from 0.2 to 4 mm²
- Strip length: 11 mm
- Possibility to insert solid wires without opening levers (push-in type)
- Max rated voltage 450 V (AC/DC), max rated current 32 A
- Max continuous service temperature: 85 °C
- With test point on back side

MATERIAL:

- Terminal bloc: transparent polycarbonate
- Levers: white polyamid
- UL94 V2

CERTIFICATIONS:

- Complies with NF EN 60998-1
- NF EN 60998-2-2

VANTAGGI TECNICI:

- Per fili rigidi e flessibili: da 0,2 a 4,0 mm²
- Lunghezza di spellatura: 11 mm
- Intensità consentita: 32 A
- Tensione consentita: 450 V
- Inserimento di cavi rigidi possibile senza sollevare i fermi (tipo push-in)
- Temperatura massima in servizio continuo: 85 °C

- Con punto di prova sul retro

MATERIALE:

Policarbonato/poliammide

CERTIFICAZIONI:

- NF EN 60998-1
- NF EN 60998-2-2



Part Number	Designation	Dimensions (W x D x H in mm)	Packing
P07312	2 WIRE CONNECTOR	13 x 21 x 11	100
P07313	3 WIRE CONNECTOR	19 x 21 x 11	50
P07315	5 WIRE CONNECTOR	30 x 21 x 11	25

MODULO SIB MODULO SIB

IP PROTECTION:

IP 65

OPERATING TEMPERATURE:

-20 °C / +125 °C

SPECIAL FEATURES:

- Compact solution with interclip-on inserts
- Discreet and aesthetic
- Quick and easy to install, push up membranes with exceptional sealing propriety, fool-proof
- Compatible with SIB cable gland

MATERIAL:

- Polypropylene reinforced with fiberglass

CERTIFICATIONS:

- EN 60529/1991 +A1
- EN 60670-1/2005+A1/2013
- Rapport SEMKO 816003

INDICE DI PROTEZIONE:

IP 65

INTERVALLO DI TEMPERATURA:

-20 °C / +125 °C

VANTAGGI TECNICI:

- Soluzione compatta tramite il collegamento a clip tra gli inserti
- Discrezione ed estetica
- Installazione facile e veloce grazie alla membrana perforabile con eccezionali proprietà impermeabili
- Spessore minimo

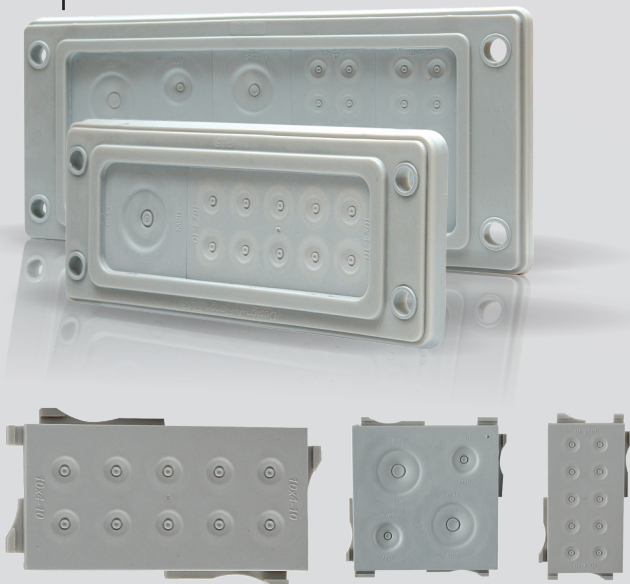
- Possibilità di ricreare la tenuta installando un nuovo inserto o un tappo PG/metrico (consultarci)
- Compatibile con un pressacavo SIB

MATERIALE:

- Polipropilene rinforzato in fibra di vetro

CERTIFICAZIONI:

- EN 60529/1991 +A1
- EN 60670-1/2005+A1/2013
- Rapporto SEMKO 816003



Part Number	MODULO SIB	Description	Packing
N2665400	2	Plate MODULO-SIB 2	10
N2665401	2	Pre-configured kit 2 x (M25, M16, M20), 20 x 4-10	10
N2665402	2	Pre-configured kit 2 x M20, 2 x 8-17, 30 x 4-10	10
N2665403	2	Pre-configured kit 18 x 7-14, 10 x 4-10	10
N2665404	1	Plate MODULO-SIB 1	10
N2665405	1	Pre-configured kit 1 x M20, 10 x 4-10	10
N2665406	2	Insert 68 x 68, 2 x M25 + 2 x M16	10
N2665407	2	Insert 68 x 68, M50, M40, M32	10
N2665408	2	Insert 68 x 68, 9 x 7-14	10
N2665409	2	Insert 68 x 68, 2 x 20-30 + 2 x 10	10
N2665411	2	Insert 68 x 34, 2 x 8-17	10
N2665412	2	Insert 68 x 34, 2 x M20	10
N2665413	2	Insert 68 x 34, 10 x 4-10	10
N2665414	1	Insert 34 x 68, 2 x 8-17	10
N2665415	1	Insert 34 x 68, 2 x M20	10
N2665416	1	Insert 34 x 68, 10 x 4-10	10
N2665417	1	Insert 34 x 34, M20	10

Dimension in millimeters



Grommet PASSE-SIB Passacavi PASSE-SIB

TPE

IP PROTECTION: IP 67

OPERATING TEMPERATURE:

-50 °C / +125 °C

SPECIAL FEATURES:

- Suitable for holes in materials of 0,5 - 4 mm thickness
- Quick and simple assembly without the use of tools

• An end-plug for all application

MATERIAL:

- TPE: Thermoplastic Elastomer
- UL approved material

CERTIFICATIONS:

- EN60529: 1991+A1
- EMKO-TUI (03-SEC) FI001/84

INDICE DI PROTEZIONE: IP 67

INTERVALLO DI TEMPERATURA:

-50 °C / +125 °C

VANTAGGI TECNICI:

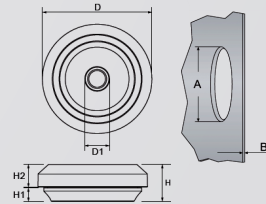
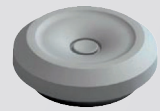
- Per pareti di spessore 0,5 - 4 mm
- Installazione facile e veloce senza attrezzi
- Un tappo che si adatta a tutte le applicazioni

MATERIALE:

- TPE : elastomero termoplastico
- CERTIFICATION UL

CERTIFICAZIONI:

- EN60529: 1991+A1
- EMKO-TUI (03-SEC) FI001/84



Metric	Thread (T)	Part Number		Clamping range Ø	A	B	D*	D1	H	H1	H2*	Packing
		RAL7035	RAL 9005									
	16	N1475711	N1475716	5 - 10	16,5	0,5 - 3,0	23,5	4,0	11,0	4,0	6,75	50
	20	N1475712	N1475717	6 - 13	20,5	0,5 - 3,0	27,5	5,0	11,0	4,0	6,75	50
	25	N1475713	N1475718	8 - 17	25,5	0,5 - 3,5	32,5	7,0	11,0	4,0	6,75	50
	32	N1475714	N1475719	12 - 21	32,5	0,5 - 4,5	39,5	11,0	11,0	4,0	6,75	25

EPDM

IP PROTECTION: IP 67

OPERATING TEMPERATURE:

-40 °C / +110 °C

SPECIAL FEATURES:

- Suitable for holes in materials of 0,5 - 4 mm thickness

• Quick and simple assembly without the use of tools

MATERIAL:

- EPDM
- Halogen free
- Resistant to chemicals and weatherproof

CERTIFICATION:

SEMKO 44:1984

INDICE DI PROTEZIONE: IP 67

INTERVALLO DI TEMPERATURA:

-40 °C / +110 °C

VANTAGGI TECNICI:

- Per pareti con spessore di 0,5 - 4 mm

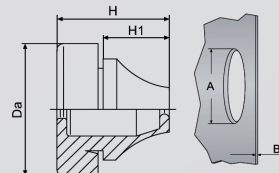
• Installazione facile e veloce senza attrezzi

MATERIALE:

- EPDM
- Senza alogeni
- Resistente ai prodotti chimici
- CERTIFICATION UL

CERTIFICATION:

SEMKO 44:1984



Metric	Thread (T)	Part Number		Clamping range Ø	A	B	Da	H	H1	Packing
		RAL7035	RAL 9005							
	12	N1458303	N1458293	4 - 7	12,5	0,5 - 2,0	20,0	12,8	5,6	50
	16	N1458304	N1458294	5 - 9	16,5	1,0 - 4,0	21,0	17,7	11,0	50
	20	N1458305	N1458295	8 - 13	20,5	1,0 - 4,0	25,5	20,0	13,4	50
	25	N1458306	N1458296	11 - 17	25,5	1,0 - 4,0	30,5	21,3	15,3	50
	32	N1458307	N1458297	15 - 20	32,5	1,0 - 4,0	38,5	24,6	18,6	25
	40	N1458308	N1458298	19 - 28	40,5	1,0 - 4,0	48,5	29,5	21,7	25
	50	N1458309	N1458299	27 - 35	50,5	1,0 - 4,0	60,5	34,8	25,0	10

KS TPE

IP PROTECTION:

IP 65 / 67

OPERATING TEMPERATURE:

-20 °C / +125 °C

SPECIAL FEATURES:

- Material thickness 1,5 - 5 mm
- IP 67 / IP 65: Suitable for holes in materials of 2 - 5 mm thickness
- Quick and simple assembly without the use of tools

MATERIAL:

- TPE: Thermoplastic Elastomer
- Polyamide 66
- Halogen Free
- UL approved material
- Integrated cable anchorage wide sealing range

CERTIFICATIONS:

- EN60529:1991+A1
- EN50262:1998
- EMLO-TUI (03-SEC) FI001/84

INDICE DI PROTEZIONE: IP 65 / 67

INTERVALLO DI TEMPERATURA:

-20 °C / +125 °C

VANTAGGI TECNICI:

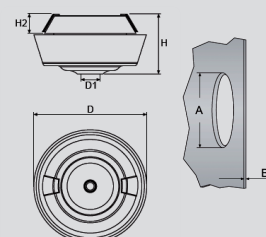
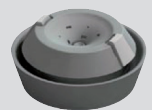
- Per pareti di spessore 1,5 - 5 mm
- IP 67/IP 65: per pareti di spessore 2 - 5 mm
- Installazione facile e veloce senza attrezzi

MATERIALE:

- TPE : elastomero termoplastico
- Poliammide 66
- Senza alogeni
- CERTIFICATION UL
- Ancoraggio integrato con grande capacità di serraggio

CERTIFICAZIONI:

- EN60529:1991+A1
- EN50262:1998
- EMLO-TUI (03-SEC) FI001/84



Metric	Thread (T)	Part Number		IP67 and anchorage Type A**	IP 65 Ø	B		H	H2	D1	D*	Packing
		RAL7035	RAL 9005			IP 67 / 65 Ø	Ø					
	20	N1475803	N1475813	7 - 11	4 - 11	20,5	2,0 - 5,0	17,0 - 20,0	5,5	4,0	29,3 - 34,5	50
	25	N1475804	N1475814	7 - 13	4 - 13	25,5	2,0 - 5,0	17,0 - 20,0	5,7	5,0	34,3 - 40,0	50

* Varies depending on the thickness of material installed in Cable / Varia in funzione dello spessore della parete

** Anchorage Type A, according to EN 50262 / Ancoraggio tipo A, in conformità con EN 50262

Dimension in millimeters

EXPLOSIVE ATMOSPHERE CABLE GLANDS

SERRACAVI
ATMOSFERA ESPLOSIVA



BRASS PLASTIC EXE EX D UNIVERSAL WITH LAMELLAS FOR NON-ARMOURED CABLES FOR ARMOURED CABLES EMC TESTED



SIB TEC
p. 26



SIB-TEC
p. 27



S-1F
p. 28



S-4F
p. 29



LOCKNUTS
CONTRODADI
p. 30



EARTH TAG
LINGUETTA DI TERRA
p. 30



SERRATED WASHERS
RONDELLE DI BLOCCAGGIO
p. 30



SHROUD
CAPPUCCI
p. 30

SPECIFICATIONS / SPECIFICHE p. 15



SIB-TEC Cable Gland Serracavi SIB-TEC



IP PROTECTION:

IP 66/68

OPERATING TEMPERATURE:

- M12: -20 °C / +80 °C
- M16 to M63 & NPT: -35 °C / +95 °C

SPECIAL FEATURES:

Flat seal on metric thread

MATERIAL:

- Polyamid 66
- Polyamid 6 (UL 94-V2)
- Flat seal: Neoprene

THREAD:

Metric, NPT (other thread on request)

ATEX SPECIFICATIONS:

- Type of protection: Ex eb / Ex tb
- Equipment group: II
- Category: 2 & 3
- Atmosphere: G & D
- Zones: 1, 2, 21, 22

CERTIFICATIONS:

- EN / IEC 60079-0 + A11
- EN / IEC 60079-7
- EN / IEC 60079-31
- VDE (Metric): 40046804
- UL: E184471
- ATEX: LCIE 07 ATEX 6082 X
- IECE X: LCI 10.0008 X
- INMETRO: BVC11.0661-X
- TR CU EX: RU C-FR.BH02.B.00558/20

ACCESSORIES AVAILABLE:

Locknut

INDICE DI PROTEZIONE:

IP 66/68

INTERVALLO DI TEMPERATURA:

- M12: -20 °C / +80 °C
- Da M16 a M63 & NPT: -35 °C / +95 °C

VANTAGGI TECNICI:

Guarnizione piatta su filettatura metrica

MATERIALE:

- Poliammide 66
- Poliammide 6 (UL 94-V2)
- Guarnizione: neoprene

FILETTATURA:

Metrica, NPT (per altri tipi, consultarci)

SPÉCIFICATIONS ATEX:

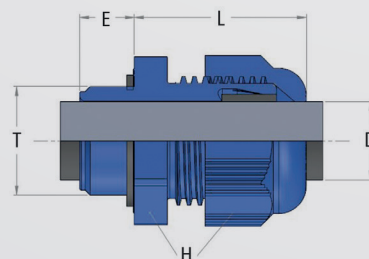
- Tipo di protezione: Ex eb / Ex tb
- Gruppo di apparecchiature: II
- Categorie: 2 & 3
- Atmosfere G & D
- Zone: 1, 2, 21, 22

CERTIFICAZIONI:

- EN / IEC 60079-0 + A11
- EN / IEC 60079-7
- EN / IEC 60079-31
- VDE (Metrica): 40046804
- UL: E184471
- ATEX: LCIE 07 ATEX 6082 X
- IECE X: LCI 10.0008 X
- INMETRO: BVC11.0661-X
- TR CU EX: RU C-FR.BH02.B.00558/20

ACCESSORI DISPONIBILI:

Controdadi



	Thread (T)	Part Number		Overall cable diameter (D)		H	E	L	Packing		Thread (T)	Part Number		L	Packing	Locknuts
		RAL 9005	RAL 5012	Min	Max							RAL 9005	RAL 5012			
Metric Short	12	F8021200E	F7421200E	4,0	6,5	15,0	8,0	24,0	50	Metric Long	12	F8031200E	F7431200E	15,0	50	D4312109
	16S	F8021650E	F7421650E	5,0	8,0	19,0	10,0	27,0	50		16S	F8031650E	F7431650E	15,0	50	D4316107
	16L	F8021600E	F7421600E	5,0	10,0	22,0	10,0	29,0	50		16L	F8031600E	F7431600E	15,0	50	D4316107
	20S	F8022050E	F7422050E	7,0	12,0	24,0	10,0	30,0	50		20S	F8032050E	F7432050E	15,0	50	D4320104
	20L	F8022000E	F7422000E	10,0	14,0	27,0	10,0	33,0	50		20L	F8032000E	F7432000E	15,0	50	D4320104
	25S	F8022550E	F7422550E	10,0	14,0	27,0	10,0	35,0	50		25S	F8032550E	F7432550E	15,0	50	D4325109
	25L	F8022500E	F7422500E	12,0	18,0	33,0	10,0	39,0	20		25L	F8032500E	F7432500E	15,0	20	D4325109
	32	F8023200E	F7423200E	16,0	25,0	42,0	10,0	42,0	20		32	F8033200E	F7433200E	15,0	20	D4332107
	40	F8024000E	F7424000E	22,0	32,0	53,0	10,0	52,0	10		40	F8034000E	F7434000E	16,0	10	H4340110
	50	F8025000E	F7425000E	28,0	38,5	60,0	12,0	55,0	5		50	F8035000E	F7435000E	16,0	5	H4350110
63	F8026300E	F7426300E	40,0	48,0	70,0	12,0	56,0	5	63	F8036300E	F7436300E	16,0	5	H4363110		
Metric Short RED*	12	F8021240E	F7421240E	3,0	5,0	15,0	8,0	24,0	50	Metric Long RED*	12	F8031240E	F7431240E	15,0	50	D4312109
	16S	F8021660E	F7421660E	4,0	6,0	19,0	10,0	27,0	50		16S	F8031660E	F7431660E	15,0	50	D4316107
	16L	F8021640E	F7421640E	4,0	7,0	22,0	10,0	29,0	50		16L	F8031640E	F7431640E	15,0	50	D4316107
	20S	F8022060E	F7422060E	5,0	9,0	24,0	10,0	30,0	50		20S	F8032060E	F7432060E	15,0	50	D4320104
	20L	F8022040E	F7422040E	8,0	12,0	27,0	10,0	33,0	50		20L	F8032040E	F7432040E	15,0	50	D4320104
	25S	F8022560E	F7422560E	8,0	12,0	27,0	10,0	35,0	20		25S	F8032560E	F7432560E	15,0	20	D4325109
	25L	F8022540E	F7422540E	10,0	16,0	33,0	10,0	39,0	20		25L	F8032540E	F7432540E	15,0	20	D4325109
	32	F8023240E	F7423240E	14,0	21,0	42,0	10,0	42,0	10		32	F8033240E	F7433240E	15,0	10	D4332107
40	F8024040E	F7424040E	16,0	26,0	53,0	10,0	52,0	5	40	F8034040E	F7434040E	16,0	5	H4340110		
50	F8025040E	F7425040E	20,0	31,0	60,0	12,0	55,0	5	50	F8035040E	F7435040E	16,0	5	H4350110		
63	F8026340E	F7426340E	30,0	39,0	70,0	12,0	56,0	5	63	F8036340E	F7436340E	16,0	5	H4363110		
NPT	3/8"	F8040800E	F7440800E	5,0	8,0	19,0	11,0	27,0	50	-	-	-	-	-	-	-
	1/2"	F8041200E	F7441200E	7,0	12,0	24,0	14,0	30,0	50	-	-	-	-	-	-	-
	3/4"	F8042000E	F7442000E	12,0	18,0	33,0	15,0	39,0	20	-	-	-	-	-	-	-
	1"	F8042800E	F7442800E	16,0	25,0	42,0	18,0	42,0	20	-	-	-	-	-	-	-
NPT RED*	3/8"	F8040840E	F7440840E	4,0	6,0	19,0	11,0	27,0	50	-	-	-	-	-	-	-
	1/2"	F8041240E	F7441240E	5,0	9,0	24,0	14,0	30,0	50	-	-	-	-	-	-	-
	3/4"	F8042040E	F7442040E	10,0	16,0	33,0	15,0	39,0	20	-	-	-	-	-	-	-
1"	F8042840E	F7442840E	14,0	21,0	42,0	18,0	42,0	20	-	-	-	-	-	-	-	-

*Reduced sealing / Guarnizione ridotta

Dimension in millimeters



SIB-TEC Cable Gland Serracavi SIB-TEC

IP PROTECTION:
IP 66/68 with sealing

OPERATING TEMPERATURE:
-40 °C / +100 °C

SPECIAL FEATURES:

- Used for the entry of round cables into metallic or plastic junction boxes
- Guarantees the sealing between the cable and the box

ATEX SPECIFICATIONS:

- Type of protections: Ex eb / Ex tb
- Equipment group: II
- Category: 2 & 3
- Atmosphere: G/D
- Zones: 1,2, 21, 22

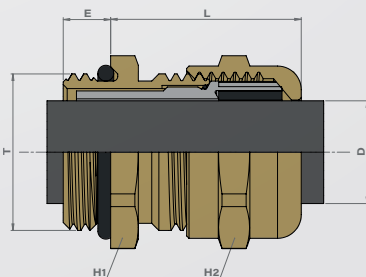
MATERIAL:
Nickel-plated brass, available in stainless steel 316L

THREAD:
Metric, PG, NPT

CERTIFICATIONS:

- EN 60079-0
- EN 60079-7
- EN 60079-31
- ATEX: LCIE 03 ATEX 6400 X
- INMETRO: BVC11.0660-X

ACCESSORIES AVAILABLE:
See page accessories



INDICE DI PROTEZIONE:
IP 66/68 con guarnizione

INTERVALLO DI TEMPERATURA:
-40 °C / +100 °C

VANTAGGI TECNICI:

- Consente il passaggio di cavi rotondi attraverso armadi in metallo o plastica
- Assicura la tenuta tra il cavo e l'armadio

SPÉCIFICATIONS ATEX:

- Tipo di protezione: Ex eb / Ex tb
- Gruppo di apparecchiature: II
- Categorie: 2 & 3
- Atmosfere G/D
- Zone: 1,2, 21, 22

MATERIALE:
Ottone nichelato, disponibilità in inox 316L

FILETTATURA:
Metrica, PG, NPT

CERTIFICAZIONI:

- EN 60079-0
- EN 60079-7
- EN 60079-31
- ATEX: LCIE 03 ATEX 6400 X
- INMETRO: BVC11.0660-X

ACCESSORI DISPONIBILI:
Consultare la pagina degli accessori



	Thread (T)	Part Number	Overall cable diameter (D)		H1	H2	E	L	Packing		Thread (T)	Part Number	E	Packing
			Min	Max										
Metric Short	12	C5212000E	4,5	6,5	14,0	14,0	5,0	25,0	50	Metric Long	12	C5312000E	15,0	50
	16	C5216000E	5,0	9,5	17,0	17,0	5,0	28,0	50		16	C5316000E	15,0	50
	20	C5220000E	8,0	13,0	22,0	22,0	6,0	32,0	50		20	C5320000E	15,0	50
	25	C5225000E	9,0	16,0	27,0	27,0	7,0	35,0	25		25	C5325000E	15,0	25
	32	C5232000E	12,0	21,0	34,0	34,0	8,0	38,0	20		32	C5332000E	15,0	20
	40	C5240000E	16,0	27,0	42,0	42,0	8,0	41,0	10		40	C5340000E	15,0	10
Metric Short RED*	50	C5250000E	23,0	35,0	55,0	55,0	9,0	46,0	5	50	C5350000E	15,0	5	
	63	C5263000E	36,0	48,0	65,0	65,0	10,0	54,0	5	63	C5363000E	15,0	5	
	12	C5212040E	3,5	5,0	14,0	14,0	5,0	25,0	50	12	C5312040E	15,0	50	
	16	C5216040E	4,0	7,0	17,0	17,0	5,0	28,0	50	16	C5316040E	15,0	50	
	20	C5220040E	5,0	10,0	22,0	22,0	6,0	32,0	50	20	C5320040E	15,0	50	
	25	C5225040E	6,0	13,0	27,0	27,0	7,0	35,0	25	25	C5325040E	15,0	25	
PG Short	32	C5232040E	8,0	17,0	34,0	34,0	8,0	38,0	20	32	C5332040E	15,0	20	
	40	C5240040E	11,0	22,0	42,0	42,0	8,0	41,0	10	40	C5340040E	15,0	10	
	50	C5250040E	18,0	29,0	55,0	55,0	9,0	46,0	5	50	C5350040E	15,0	5	
	63	C5263040E	29,0	40,0	65,0	65,0	10,0	54,0	5	63	C5363040E	15,0	5	
	07	C5007000E	4,5	6,5	14,0	14,0	5,0	25,0	50	07	C5107000E	15,0	50	
	09	C5009000E	5,0	9,5	17,0	17,0	6,0	29,0	50	09	C5109000E	15,0	50	
PG Long	11	C5011000E	7,0	11,5	20,0	20,0	6,0	30,0	50	11	C5111000E	15,0	50	
	13	C5013000E	8,0	13,0	22,0	22,0	6,5	32,5	50	13	C5113000E	15,0	50	
	16	C5016000E	9,0	15,0	24,0	24,0	6,5	34,0	50	16	C5116000E	15,0	50	
	21	C5021000E	12,0	19,0	30,0	30,0	7,0	35,0	20	21	C5121000E	15,0	20	
	29	C5029000E	17,0	26,0	40,0	40,0	8,0	38,0	20	29	C5129000E	15,0	20	
	36	C5036000E	23,0	34,5	50,0	50,0	9,0	42,0	10	36	C5136000E	15,0	10	
PG Short RED*	42	C5042000E	28,0	40,0	58,0	58,0	10,0	47,0	5	42	C5142000E	15,0	5	
	48	C5048000E	36,0	48,0	65,0	65,0	10,0	54,0	5	48	C5148000E	15,0	5	
	48DIN	C5049000E	36,0	48,0	65,0	65,0	10,0	54,0	5	48DIN	C5149000E	15,0	5	
	07	C5007400E	3,5	5,0	14,0	14,0	5,0	25,0	50	07	C5107400E	15,0	50	
	09	C5009400E	4,0	7,0	17,0	17,0	6,0	29,0	50	09	C5109400E	15,0	50	
	11	C5011400E	4,0	8,5	20,0	20,0	6,0	30,0	50	11	C5111400E	15,0	50	
PG Long RED*	13	C5013400E	5,0	10,0	22,0	22,0	6,5	32,5	50	13	C5113400E	15,0	50	
	16	C5016400E	6,0	12,0	24,0	24,0	6,5	34,0	50	16	C5116400E	15,0	50	
	21	C5021400E	9,0	16,0	30,0	30,0	7,0	35,0	20	21	C5121400E	15,0	20	
	29	C5029400E	12,0	21,0	40,0	40,0	8,0	38,0	20	29	C5129400E	15,0	20	
	36	C5036400E	17,0	28,0	50,0	50,0	9,0	42,0	10	36	C5136400E	15,0	10	
	42	C5042400E	23,0	34,0	58,0	58,0	10,0	47,0	5	42	C5142400E	15,0	5	
NPT	48	C5048400E	29,0	40,0	65,0	65,0	10,0	54,0	5	48	C5148400E	15,0	5	
	48DIN	C5049400E	29,0	40,0	65,0	65,0	10,0	54,0	5	48DIN	C5149400E	15,0	5	
	3/8"	C5408000E	5,0	9,5	17,0	18,0	15,0	38,0	50	3/8"	C5408400E	15,0	50	
	1/2"	C5412000E	8,0	13,0	22,0	23,0	20,0	46,0	50	1/2"	C5412400E	20,0	50	
	3/4"	C5420000E	9,0	16,0	27,0	28,0	20,0	48,0	20	3/4"	C5420400E	20,0	20	
	1"	C5428000E	12,0	21,0	34,0	36,0	25,0	55,0	20	1"	C5428400E	25,0	20	

*Reduced sealing / Guarnizione ridotta

Dimension in millimeters

S-1F Cable Gland Serracavi S-1F



SINGLE SEALING

IP PROTECTION:

IP 66/68

OPERATING TEMPERATURE:

- Neoprene: -60 °C / +80 °C
- Viton: -20 °C / +200 °C (on request)
- Graphite washer: -200 °C / +450 °C

SPECIAL FEATURES:



- Suitable for non armoured cable
- Explosion proof sealing on external sheath

MATERIAL:

Brass, nickel-plated brass, available in stainless steel 316L

THREAD:

Metric, NPT (other thread on request)

ATEX SPECIFICATIONS:

- Type of protection: Ex db / Ex eb / Ex tb
- Equipment group: IIA, IIB, IIC et IIIA, IIIB, IIIC
- Category: 2 & 3
- Atmosphere: G & D
- Zones: 1, 2, 21, 22

CERTIFICATIONS:

- EN/IEC 60079-0
- EN/IEC 60079-1
- EN/IEC 60079-7
- EN/IEC 60079-31
- LCIE 16 ATEX 3030 X
- IECEx LCIE 16.0026X
- BVC16.5800-X
- CE19.5255X
- TR CU EX: RU C-FR.BH02.B.00558/20

ACCESSORIES AVAILABLE:

See page accessories

TENUTA SINGOLA

INDICE DI PROTEZIONE:

IP 66/68

INTERVALLO DI TEMPERATURA:

- Neoprene: -60 °C / +80 °C
- Viton: -20 °C / +200 °C (su richiesta)
- Giunto in grafite: -200 °C / +450 °C

VANTAGGI TECNICI:



- Per cavi non armati
- Guarnizione antideflagrante sulla guaina esterna

MATERIALE:

Ottone, ottone nichelato, disponibilità in inox 316L

FILETTATURA:

Metrica, NPT (per altre tipologie, consultarci)

SPÉCIFICATIONS ATEX:

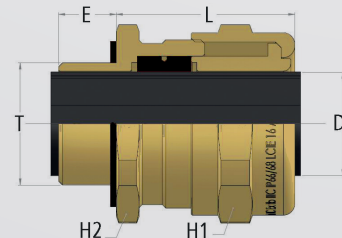
- Tipo di protezione: Ex db / Ex eb / Ex tb
- Gruppo di apparecchiature: IIA, IIB, IIC et IIIA, IIIB, IIIC
- Categoria: 2 & 3
- Atmosfere G & D
- Zone: 1, 2, 21, 22

CERTIFICAZIONI:

- EN/IEC 60079-0
- EN/IEC 60079-1
- EN/IEC 60079-7
- EN/IEC 60079-31
- LCIE 16 ATEX 3030 X
- IECEx LCIE 16.0026X
- BVC16.5800-X
- CE19.5255X
- TR CU EX: RU C-FR.BH02.B.00558/20

ACCESSORI DISPONIBILI:

Consultare la pagina degli accessori



	Thread (T)	Part Number	E	Packing		Thread (T)	Part Number	E	Packing	Overall cable diameter (D)		H1	H2	L
										Min	Max			
Metric	12	4704121	15,0	1	NPT	1/4"	4704061	16,0	1	5,0	7,5	20,0	20,0	29,7
	16S	4704161	15,0	1		3/8"	4704081	16,0	1	5,0	7,5	20,0	20,0	29,7
	-	-	-	-		1/2"	4704151	20,0	1	5,0	7,5	20,0	24,0	29,7
	16L	4705161	15,0	1		3/8"	4705081	16,0	1	7,0	11,5	24,0	24,0	31,9
	20S	4705201	15,0	1		1/2"	4705151	20,0	1	7,0	11,5	24,0	24,0	31,9
	20L	4706201	15,0	1		1/2"	4706151	20,0	1	11,0	15,5	30,0	30,0	33,2
	25XS	4705251	15,0	1		3/4"	4705171	21,0	1	7,0	11,5	24,0	28,0	31,9
	25S	4706251	15,0	1		3/4"	4706171	21,0	1	11,0	15,5	30,0	30,0	33,2
	25L	4707251	15,0	1		3/4"	4707171	21,0	1	13,0	20,0	40,0	40,0	39,5
	32S	4707321	15,0	1		1"	4707281	25,0	1	13,0	20,0	40,0	40,0	39,5
	32L	4708321	15,0	1		1"	4708281	25,0	1	19,0	27,0	48,0	48,0	47,0
	40S	4708401	15,0	1		1" 1/4	4708351	26,0	1	19,0	27,0	48,0	48,0	47,0
	40L	4709401	15,0	1		1" 1/4	4709351	26,0	1	22,0	33,5	55,0	55,0	52,0
	50S	4709501	15,0	1		1" 1/2	4709411	26,0	1	22,0	33,5	55,0	55,0	52,0
	50L	4710501	15,0	1		1" 1/2	4710411	26,0	1	29,0	40,5	64,0	64,0	53,5
	63S	4711631	15,0	1		2"	4711471	27,0	1	35,0	47,5	70,0	70,0	55,0
	63L	4712631	15,0	1		2"	4712471	27,0	1	40,0	54,0 (NPT 52,5)	90,0	90,0	61,0
	75S	4712751	15,0	1		2" 1/2	4712521	40,0	1	40,0	54,0 (NPT 52,5)	90,0	90,0	61,0
	75L	4713751	15,0	1		2" 1/2	4713521	40,0	1	48,0	64,5 (NPT 63,5)	100,0	100,0	69,0
	80S	4713801	20,0	1		-	-	-	-	48,0	64,5	100,0	100,0	64,0
	80L	4714801	20,0	1		-	-	-	-	55,0	73,5	115,0	115,0	80,0
	90S	4714901	20,0	1		3"	4714571	42,0	1	55,0	73,5	115,0	115,0	80,0
	90L	4715901	20,0	1		3"	4715571	42,0	1	65,0	82,5 (NPT 78,5)	125,0	125,0	82,0
	100S	4715991	20,0	1		3" 1/2	4715581	43,0	1	65,0	82,5 (NPT 78,5)	125,0	125,0	82,0
	100L	4716991	20,0	1		3" 1/2	4716581	43,0	1	74,0	92,5 (NPT 89)	140,0	140,0	87,0

Dimension in millimeters



S-4F Cable Gland Serracavi S-4F

DOUBLE SEALING

IP PROTECTION:

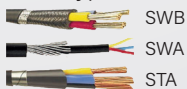
IP 66/68

OPERATING TEMPERATURE:

- Neoprene: -60 °C / +80 °C
- Viton: -20 °C / +200 °C (on request)
- Graphite washer: -200 °C / +450 °C

SPECIAL FEATURES:

- Suitable for the following cable types:



- Increased strain relief
- Detachable grounding device
- Sealing on external cable sheath
- Explosion proof sealing on internal sheath
- Deluge proof option for armour protection

MATERIAL:

Brass, nickel-plated brass, stainless steel

THREAD:

Metric, NPT (other thread on request)

ATEX SPECIFICATIONS:

- Type of protection: Ex db / Ex eb / Ex tb
- Equipment group: IIA, IIB, IIC et IIIA, IIIB, IIIC
- Category: 2 & 3
- Atmosphere: G & D
- Zones: 1, 2, 21, 22

CERTIFICATIONS & COMPLIANCES:

- EN/IEC 60079-0
- EN/IEC 60079-1
- EN/IEC 60079-7
- EN/IEC 60079-31
- LCIE 16 ATEX 3030 X
- IECEx LCIE 16.0026X
- BVC16.5800-X
- CE19.5255X
- TR CU EX: RU C-FR.BH02.B.00558/20

ACCESSORIES AVAILABLE:

See page accessories

DOPPIA TENUTA

INDICE DI PROTEZIONE:

IP 66/68

INTERVALLO DI TEMPERATURA:

- Neoprene: -60 °C / +80 °C
- Viton: -20 °C / +200 °C (su richiesta)
- Giunto in grafite: -200 °C / +450 °C

VANTAGGI TECNICI:

- Per cavi:
 - SWB
 - SWA
 - STA
- Resistenza alla trazione rinforzata
- Dispositivo di ancoraggio integrato
- Guarnizione della guaina esterna del cavo
- Guarnizione antideflagrante sulla guaina esterna
- Protezione da inondazioni, tenuta dell'armatura

MATERIALE:

Ottone, ottone nichelato, disponibilità in inox 316L

FILETTATURA:

Metrica, NPT (per altre filettature, consultarci)

SPÉCIFICATIONS ATEX:

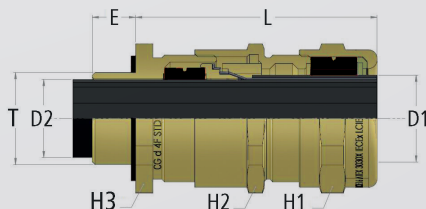
- Tipo di protezione: Ex db / Ex eb / Ex tb
- Gruppo di apparecchiature: IIA, IIB, IIC et IIIA, IIIB, IIIC
- Categoria: 2 & 3
- Atmosfera: G & D
- Zone: 1, 2, 21, 22

CERTIFICAZIONI:

- EN/IEC 60079-0
- EN/IEC 60079-1
- EN/IEC 60079-7
- EN/IEC 60079-31
- LCIE 16 ATEX 3030 X
- IECEx LCIE 16.0026X
- BVC16.5800-X
- CE19.5255X
- TR CU EX: RU C-FR.BH02.B.00558/20

ACCESSORI DISPONIBILI:

Consultare la pagina degli accessori

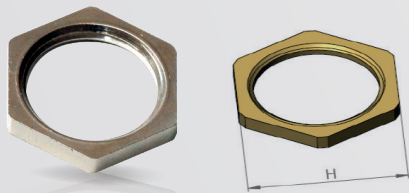


	Thread (T)	Part Number	E	Packing		Thread (T)	Part Number	E	Packing	Max. armour thickness	Overall cable diameter (D1)		Cable bending diameter (D2)		H1	H2	H3	L
											Min	Max	Min	Max				
Metric	12S	4805121	15,0	1	NPT	1/4"	4805061	16,0	1	1,00	7,0	11,5	4,0	8,0	20,0	20,0	20,0	45,0
	16S	4805161	15,0	1		3/8"	4805081	16,0	1	1,00	7,0	11,5	4,0	8,0	20,0	20,0	20,0	45,0
	16L	4806161	15,0	1		3/8"	4806081	16,0	1	1,25	9,0	15,5	7,0	12,0	24,0	24,0	24,0	47,0
	20XS	4805201	15,0	1		1/2"	4805151	20,0	1	1,00	7,0	11,5	4,0	8,0	20,0	20,0	24,0	45,0
	20S	4806201	15,0	1		1/2"	4806151	20,0	1	1,25	9,0	15,5	7,0	12,0	24,0	24,0	24,0	47,0
	20L	4807201	15,0	1		1/2"	4807151	20,0	1	1,25	13,0	20,0	9,5	15,5	30,0	30,0	30,0	52,0
	25XS	4806251	15,0	1		3/4"	4806171	21,0	1	1,25	9,0	15,5	7,0	12,0	24,0	24,0	28,0	47,0
	25S	4807251	15,0	1		3/4"	4807171	21,0	1	1,25	13,0	20,0	9,5	15,5	30,0	30,0	30,0	52,0
	25L	4808251	15,0	1		3/4"	4808171	21,0	1	1,60	18,0	27,0	14,0	20,5	40,0	40,0	40,0	68,0
	32S	4808321	15,0	1		1"	4808281	25,0	1	1,60	18,0	27,0	14,0	20,5	40,0	40,0	40,0	68,0
	32L	4809321	15,0	1		1"	4809281	25,0	1	2,00	23,0	33,5	17,0	27,0 (NPT 26,0)	48,0	48,0	48,0	80,5
	40S	4809401	15,0	1		1" 1/4	4809351	26,0	1	2,00	23,0	33,5	17,0	27,0 (NPT 26,0)	48,0	48,0	48,0	81,0
	40L	4810401	15,0	1		1" 1/4	4810351	26,0	1	2,00	28,0	40,5	21,0	33,5	55,0	55,0	55,0	82,9
	50XS	4810501	15,0	1		1" 1/2	4810411	26,0	1	2,00	28,0	40,5	21,0	33,5	55,0	55,0	55,0	83,0
	50S	4811501	15,0	1		1" 1/2	4811411	26,0	1	2,50	34,0	47,5	27,0	40,5	64,0	64,0	64,0	90,5
	50L	4812501	15,0	1		1" 1/2	4812411	26,0	1	2,50	39,0	54,0	33,0	44,0 (NPT 41,0)	70,0	70,0	75,0	89,0
	63S	4812631	15,0	1		2"	4812471	27,0	1	2,50	39,0	54,0	33,0	46,0 (NPT 41,0)	70,0	70,0	75,0	89,0
	63L	4813631	15,0	1		2"	4813471	27,0	1	2,50	48,0	64,5	40,0	54,0 (NPT 52,5)	90,0	85,0	85,0	100,5
	75S	4813751	15,0	1		2" 1/2	4813521	40,0	1	2,50	48,0	64,5	40,0	54,0 (NPT 52,5)	90,0	85,0	85,0	101,0
	75L	4814751	15,0	1		2" 1/2	4814521	40,0	1	2,50	55,0	73,5	47,0	64,5 (NPT 63,5)	100,0	100,0	100,0	110,0
80S	4814801	20,0	1	-	-	-	-	2,50	55,0	73,5	47,0	64,5	100,0	100,0	100,0	105,0		
80L	4815801	20,0	1	-	-	-	-	3,15	67,0	82,5	56,0	72,0	115,0	110,0	110,0	114,0		
90S	4815901	20,0	1	-	-	-	-	3,15	67,0	82,5	56,0	73,5 (NPT 72,0)	115,0	110,0	110,0	114,0		
90L	4816901	20,0	1	-	-	-	-	3,15	82,0	92,5	71,5	80,5 (NPT 78,5)	125,0	125,0	125,0	116,0		
100L	4816991	20,0	1	-	-	-	-	3,15	82,0	92,5	71,5	81,5 (NPT 78,5)	125,0	125,0	125,0	116,0		

Dimension in millimeters

LOCKNUTS / EARTH TAG / SERRATED WASHERS / SHROUD CONTRODADI / LINGUETTA DI TERRA / RONDELLE DI BLOCCAGGIO / CAPPUCCI

LOCKNUTS CONTRODADI



Metric	Thread (T)	Part Number			H	Thickness	Packing
		Brass	Nickel plated	Stainless steel			
	12	D4312000	D4312109	D7812920	15	3,0	50
	16	D4316008	D4316107	D7816920	20 / 19(SS)	3,0	50
	20	D4320005	D4320104	D7820920	24	3,5	50
	25	D4325000	D4325109	D7825920	30	3,5	25
	32	D4332008	D4332107	D7832920	35 / 36(SS)	4,5	20
	40	D4340003	D4340102	D7840920	45 / 46(SS)	4,5	10
	50	D4350002	D4350101	D7850920	55	5,5	5
	63	D4363002	D4363101	D7863920	70	6,0	5
	75	D4375005	D4375104	D7875920	80	8,0	5
	80	D4380000	D4380100	D7880920	90	10,0	5
	90	D4390000	D4390100	D7890920	100	12,0	5
	100	D4399000	D4399100	D7899920	110	12,0	5
	110	ON REQUEST	D4311100	ON REQUEST	125	15,0	1

EARTH TAG LINGUETTA DI TERRA



Metric	Thread (T)	Part Number	ØA	ØB	ØC	D	E	Thickness	Packing
		Brass							
	12	N9812100	12,0	6,6	29,0	26,8	47,9	1,0	100
	16	N9816100	16,0	6,6	29,0	26,6	47,9	1,0	100
	20	N9820100	20,1	6,7	29,0	25,7	47,9	1,0	100
	25	N9825100	25,2	6,7	36,9	31,0	57,2	1,0	100
	32	N9832100	32,1	6,9	43,7	37,7	69,5	1,0	50
	40	N9840100	39,9	6,9	52,6	43,4	78,0	1,2	50
	50	N9850100	50,0	6,9	64,4	49,9	90,4	1,2	50
	63	N9863100	62,8	6,9	79,6	65,3	116,8	1,3	25
	75	N9875100	75,6	6,9	96,0	74,4	133,5	1,3	25
	80								-
	90								-
	100								-

SERRATED WASHERS RONDELLE DI BLOCCAGGIO



Metric	Thread (T)	Part Number		Ø outer	Packing
		Zinc steel	Stainless steel		
	16	N8816000	N8716000	25,5	50
	20	N8820000	N8720000	32,5	50
	25	N8825000	N8725000	40,0	25
	32	N8832000	N8732000	43,0	20
	40	N8840000	N8740000	60,0	10
	50	N8850000	N8750000	78,0	5
	63	N8863000	N8763000	98,0	5
	75	N8875000	N8775000	110,0	5
	80				-
	90				-
	100				-

SHROUD CAPPUCCI



Metric	Cable glands size	S-CW	S-E1W	S-1F	S-4F
			12S	N0805000	N0805000
	16S	N0805000	N0805000	N0804000	N0805000
	16L	N0806000	N0806000	N0805000	N0806000
	20XS	N0805000	N0805000	-	N0805000
	20S	N0806000	N0806000	N0805000	N0806000
	20L	N0807000	N0807000	N0806000	N0807000
	25XS	N0806000	N0806000	N0805000	N0806000
	25S	N0807000	N0807000	N0806000	N0807000
	25L	N0808000	N0808000	N0807000	N0808000
	32S	N0808000	N0808000	N0807000	N0808000
	32L	N0809000	N0809000	N0808000	N0809000
	40S	N0809000	N0809000	N0808000	N0809000
	40L	N0810000	N0810000	N0809000	N0810000
	50XS	-	-	-	N0810000
	50S	N0810000	N0810000	N0809000	N0811000
	50L	N0811000	N0811000	N0810000	N0812000
	63S	N0812000	N0812000	N0811000	N0812000
	63L	N0813000	N0813000	N0812000	N0813000
	75S	N0813000	N0813000	N0812000	N0813000
	75L	N0814000	N0814000	N0813000	N0814000
	80S	N0814000	N0814000	N0813000	N0814000
	80L	N0815000	N0815000	N0814000	N0815000
	90S	N0815000	N0815000	N0814000	N0815000
	90L	N0816000	N0816000	N0815000	N0816000
	100S	N0816000	N0816000	N0815000	-
	100L	-	-	N0816000	N0816000



**CABLE PROTECTION
& CORRUGATED TUBES**

**→
GUAINE DI PROTEZIONE
E RACCORDI**



Solutions Builder

	PLASTIC	ZINC STEEL	HALOGEN FREE	EN45546
PP / p. 34	✓		✓	
MSB 7 APE / p. 34	✓	✓		
PP MOD / p. 35	✓		✓	
MS / p. 35		✓		
PA6 HB LIGHT / p. 36	✓		✓	
PA6 HB / p. 36	✓		✓	
PA6 TWINFLEX / p. 37	✓		✓	✓
PA6 BS V0 / p. 37	✓		✓	✓
METALLO-PLASTIC CONDUITS HALO / p. 38	✓	✓	✓	✓
PA6 NORMAL PROFILE / p. 38	✓		✓	
PA6 UFW / p. 39	✓		✓	
PA12 / p. 39	✓		✓	

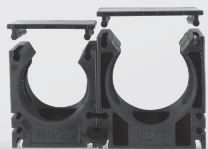
BRASS

PLASTIC

HALOGEN FREE



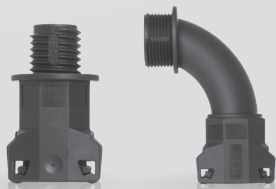
KOMBI FITTINGS
RACCORDI KOMBI
p. 40



CLAMPS FOR PLASTIC CORRUGATED
TUBES BLACK / STAFFE
p. 40



BRASS FITTINGS
RACCORDI AD AVVITARE
p. 41



SEM FAST STRAIGHT
90° ELBOW FITTINGS
RACCORDI SEM FAST DIRITTI A GOMITO 90°
p. 41



SPECIFICATIONS / SPECIFICHE p. 15

PLASTIC

HALOGEN
FREE

Corrugated tubes **PP** normal profile - black *Guaine corrugate **PP** profilo normale - nero*

**OPERATING TEMPERATURE:**

3000 h: -40 °C / +105 °C
350 h: -40 °C / +135 °C

SPECIAL FEATURES:

- Excellent chemical resistance
- Great shape permanence to heat
- Enormous cold impact strength
- High strength

- Bending stabile
- White edging
- Burning behaviour FMVSS 302
- UV resistant
- DIN EN ISO 8580

MATERIAL:

- Polypropylene

ACCESSORIES AVAILABLE:

See page accessories

INTERVALLO DI TEMPERATURA:

3000 h: -40 °C / +105 °C
350 h: -40 °C / +135 °C

VANTAGGI TECNICI:

- Buona resistenza all'attacco chimico
- Resistenza a grassi, oli minerali, alcoli, solventi in concentrazione
- Bordatura bianca

- Autoestingente FMVSS 302

- Resistenza agli UV
- DIN EN ISO 8580

MATERIALE:
Polipropilene

ACCESSORI DISPONIBILI:

Consultare la pagina degli accessori



NW	A Ø	I Ø	Bending radius	Container		Coils		
				Part number split	Packing m	Part number split	Part number closed	Packing m
3	5,1	2,8	≥ 4,5	Y1951003	18000	Y1926653	Y1926603	200
4,5	7,1	5,0	≥ 12,0	Y1951004	10000	Y1926654	Y1926604	100
6	9,2	6,0	≥ 10,0	Y1951006	5000	Y1926656	Y1926606	100
7,5	9,9	6,9	≥ 15,0	Y1951007	5000	Y1926657	Y1926607	50
8,5	11,6	8,5	≥ 18,0	Y1951008	4000	Y1926658	Y1926608	50
10	12,7	10,1	≥ 18,0	Y1951010	3300	Y1926660	Y1926610	50
12	15,6	12,0	≥ 20,0	Y1951012	2200	Y1926662	Y1926612	50
13	15,8	12,9	≥ 22,0	Y1951013	2200	Y1926663	Y1926613	50
14	18,3	14,5	≥ 25,0	Y1951014	1700	Y1926664	Y1926614	50
16	18,8	15,2	≥ 25,0	Y1951016	1500	Y1926666	Y1926616	50
17	21,0	16,8	≥ 30,0	Y1951017	1300	Y1926667	Y1926617	50
19	24,0	19,4	≥ 35,0	Y1951019	1000	Y1926669	Y1926619	50
22	25,5	21,8	≥ 37,0	Y1951022	900	Y1926672	Y1926622	50
23	28,0	23,7	≥ 42,0	Y1951023	700	Y1926673	Y1926623	50
26	31,3	26,4	≥ 47,0	Y1951026	500	Y1926676	Y1926626	25
29	33,9	29,3	≥ 60,0	Y1951029	400	Y1926679	Y1926629	25
37	42,0	36,7	≥ 70,0	Y1951037	300	Y1926687	Y1926637	25
50	53,6	47,8	≥ 130,0	Y1951050	200	Y1926690	Y1926650	25

Metallic conduits PVC covered **MSB 7 APE** type *Guaine metalliche rivestite in PVC tipo **MSB 7 APE***

PLASTIC

ZINC
STEEL**OPERATING TEMPERATURE:**

-20 °C / +80 °C

SPECIAL FEATURES:

- IP 67
- Water tight
- Simple fastening
- Helical - corrugated
- NFC 68/09 standard LCIE certified

- Tight protection barrier for conductors and insulated wire network

MATERIAL:

- Zinc steel
- PVC covered

ACCESSORIES AVAILABLE:

Brass fittings

INTERVALLO DI TEMPERATURA:

-20 °C / +80 °C

VANTAGGI TECNICI:

- IP 67
- Impermeabile e facile aggraffatura
- Certificazione conforme alla norma NFC 68/09 LCIE Protezione meccanica impermeabile

di conduttori e cablaggi elettrici

MATERIALE:

- Acciaio zincato
- PVC

ACCESSORI DISPONIBILI:

Consultare la pagina degli accessori



Conduit for adaptors PG / ISO	A Ø	I Ø	Bending radius	Part number closed	Packing m
07 - M12	13,3	9,6	32,0	M0407007	50
09 - M16	15,4	11,4	40,0	M0409001	50
11 - M16	18,8	14,2	45,0	M0411004	50
13 - M20	20,6	16,0	50,0	M0413008	50
16 - M20	22,7	18,0	50,0	M0416009	50
21 - M25	28,5	23,0	60,0	M0421003	25
29 - M32	37,0	31,1	70,0	M0429009	25
36 - M40	47,3	40,3	95,0	M0436007	15
48 - M63	60,2	51,8	130,0	M0448000	15



Corrugated tubes **PP MOD** normal profile - black *Guaine corrugate **PP MOD** profilo normale - nero*

OPERATING TEMPERATURE:

3000 h: -40 °C / +105 °C
 350 h: -40 °C / +135 °C

SPECIAL FEATURES:

- Excellent chemical resistance
- Great shape permanence to heat
- Enourmous cold impact strength
- High strength

- Bending stabile
 - White edging
 - Burning behaviour FMVSS 302
 - UV resistant
- DIN EN ISO 8580

MATERIAL:

- Polypropylene

ACCESSORIES AVAILABLE:

See page accessories

INTERVALLO DI TEMPERATURA:

3000 h: -40 °C / +105 °C
 350 h: -40 °C / +135 °C

VANTAGGI TECNICI:

- Buona resistenza all'attacco chimico
- Resistenza a grassi, oli minerali, alcoli, solventi in concentrazione
- Bordatura bianca

MATERIALE:

- Autoestinguento FMVSS 302
- Resistenza agli UV DIN EN ISO 8580

MATERIALE:

Polipropilene

ACCESSORI DISPONIBILI:

Consultare la pagina degli accessori



NW	A Ø	I Ø	Container				Coils		
			Part number split	Packing m	Part number closed	Packing m	Part number split	Part number closed	Packing m
3	5,1	2,8	Y1950003	18000	Y1950053	18000	Y1926303	Y1926003	200
4,5	7,1	5,0	Y1950004	10000	Y1950054	9000	Y1926304	Y1926004	100
6	9,2	6,0	Y1950006	5000	Y1950055	5000	Y1926306	Y1926006	100
7,5	9,9	6,9	Y1950007	5000	Y1950056	5000	Y1926307	Y1926007	50
8,5	11,6	8,5	Y1950008	4000	Y1950057	3300	Y1926308	Y1926008	50
10	12,7	10,1	Y1950010	3300	Y1950058	3000	Y1926310	Y1926100	50
12	15,6	12,0	Y1950012	2200	Y1950059	2200	Y1926312	Y1926120	50
13	15,8	12,9	Y1950013	2200	Y1950060	2000	Y1926313	Y1926130	50
14	18,3	14,5	Y1950014	1700	Y1950061	1700	Y1926314	Y1926140	50
16	18,8	15,2	Y1950016	1500	Y1950062	1500	Y1926316	Y1926160	50
17	21,0	16,8	Y1950017	1300	Y1950063	1100	Y1926317	Y1926170	50
19	24,0	19,4	Y1950019	1000	Y1950064	800	Y1926319	Y1926190	50
22	25,5	21,8	Y1950022	900	Y1950065	700	Y1926322	Y1926220	50
23	28,0	23,7	Y1950023	700	Y1950066	650	Y1926323	Y1926223	50
26	31,3	26,4	Y1950026	500	Y1950067	600	Y1926326	Y1926226	25
29	33,9	29,3	Y1950029	500	Y1950068	450	Y1926329	Y1926229	25
37	42,0	36,7	Y1950037	300	Y1950069	250	Y1926337	Y1926237	25
50	53,6	47,8	Y1950050	200	Y1950070	150	Y1926350	Y1926250	25



Metallic conduits **MS** *Guaine metalliche **MS***

OPERATING TEMPERATURE:

-50 °C / +300 °C

SPECIAL FEATURES:

- IP 50
- Round cross section
- Helical - corrugated
- Angular profile
- Simple and double festening (Ø60 to Ø100)
- Metal protective tube without sealing

- Pressure profound impact resistant
- Stabile protective tube for electric wiring of machine connections and high voltage current line as and bent hose.

MATERIAL: Zinc steel

ACCESSORIES AVAILABLE:

Brass fittings

INTERVALLO DI TEMPERATURA:

-50 °C / +300 °C

VANTAGGI TECNICI:

- IP50
- Aggraffatura semplice e doppia (da Ø60 a Ø100)
- Protezione termica dei cablaggi elettrici

MATERIALE:

Acciaio zincato

ACCESSORI DISPONIBILI:

Consultare la pagina degli accessori



Conduit for adaptors PG / ISO	A Ø	I Ø	Bending radius	Part number closed	Packing m
07 - M10	10,0	8,0	28,0	M0006002	50
07 - M12	13,0	10,0	28,0	M0007009	50
09 - M16	14,0	11,0	30,0	M0009003	50
11 - M16	17,0	14,0	30,0	M0011006	50
13 - M20	19,0	16,0	40,0	M0013000	50
16 - M20	20,0	17,0	40,0	M0016001	50
21 - M25	27,0	23,0	50,0	M0021005	25
29 - M32	36,0	32,0	70,0	M0029001	25
36 - M40	45,0	40,0	90,0	M0036009	25
48 - M63	56,0	50,0	110,0	M0048002	25



Corrugated tubes **PA6 HB LIGHT** normal profile - black *Guaine corrugate **PA6 HB LIGHT** profilo normale - nero*

PLASTIC

HALOGEN
FREE**OPERATING TEMPERATURE:**

3000 h: -40 °C / +120 °C
240 h: -40 °C / +150 °C

SPECIAL FEATURES:

- Inflammability: UL 94 HB
- UV resistant
- For high mechanical stresses

MATERIAL:

Polyamid 6

ACCESSORIES AVAILABLE:

See page accessories

INTERVALLO DI TEMPERATURA:

3000 h: -40 °C / +120 °C
240 h: -40 °C / +150 °C

VANTAGGI TECNICI:

- Infiammabilità: UL 94 HB
- Resistente agli UV
- Elevate sollecitazioni meccaniche

MATERIALE:

Poliammide 6

ACCESSORI DISPONIBILI:

Consultare la pagina degli accessori

NW	A Ø	I Ø	Part Number	Packing m
7,5	10,0	6,7	M1212079	50
8,5	11,5	8,5	M1212853	50
10	13,2	10,1	M1212105	50
12	15,7	12,5	M1212129	50
14	18,5	14,5	M1212143	50
17	21,2	17,0	M1212174	50
22	25,6	21,6	M1212222	50
23	28,4	23,5	M1212235	50
29	34,5	29,4	M1212297	25
37	42,2	36,7	M1212372	25
50	54,0	48,1	M1212501	25

Corrugated tubes **PA6 HB** normal profile - black *Guaine corrugate **PA6 HB** profilo normale - nero*

PLASTIC

HALOGEN
FREE**OPERATING TEMPERATURE:**

3000 h: -40 °C / +120 °C
240 h: -40 °C / +150 °C

SPECIAL FEATURES:

- Inflammability: UL 94 HB
- UV resistant
- For high mechanical stresses

MATERIAL:

Polyamid 6

ACCESSORIES AVAILABLE:

See page accessories

INTERVALLO DI TEMPERATURA:

3000 h: -40 °C / +120 °C
240 h: -40 °C / +150 °C

VANTAGGI TECNICI:

- Infiammabilità: UL 94 HB
- Resistente agli UV
- Elevate sollecitazioni meccaniche

MATERIALE:

Poliammide 6

ACCESSORI DISPONIBILI:

Consultare la pagina degli accessori

NW	A Ø	I Ø	Container				Coils		
			Part number split	Packing m	Part number closed	Packing m	Part number split	Part number closed	Packing m
3	5,1	2,8	Y1205503	18000	Y1200073/C	18000	Y1205030	Y1200073	200
4,5	7,1	5,0	Y1205504	10000	Y1200058/C	9000	Y1205045	Y1200058	100
6	9,2	6,0	Y1205506	5000	Y1200069/C	5000	Y1205060	Y1200069	100
7,5	10,0	6,7	Y1205507	5000	Y1200072/C	5000	Y1205072	Y1200072	50
8,5	11,7	8,4	Y1205508	4000	Y1200089/C	3300	Y1205080	Y1200089	50
10	13,0	9,9	Y1205510	3300	Y1200102/C	3000	Y1205102	Y1200102	50
12	15,7	12,2	Y1205512	2200	Y1200126/C	2200	Y1205121	Y1200126	50
13	15,8	12,7	Y1205513	2200	Y1200133/C	2000	Y1205137	Y1200133	50
14	18,5	14,2	Y1205514	1700	Y1200140/C	1700	Y1205145	Y1200140	50
16	18,9	15,0	Y1205516	1300	Y1200164/C	1100	Y1205161	Y1200164	50
17	21,2	16,6	Y1205517	1300	Y1200171/C	1100	Y1205176	Y1200171	50
19	24,3	19,3	Y1205519	1000	Y1200194/C	800	Y1205196	Y1200194	50
22	25,4	21,3	Y1205522	900	Y1200225/C	700	Y1205220	Y1200225	50
23	28,3	23,2	Y1205523	700	Y1200232/C	650	Y1205234	Y1200232	50
26	31,2	25,8	Y1205526	500	Y1200263/C	600	Y1205269	Y1200263	25
29	34,5	29,0	Y1205529	500	Y1200294/C	450	Y1205290	Y1200294	25
37	42,4	36,0	Y1205537	300	Y1200379/C	250	Y1205374	Y1200379	25
50	54,0	47,7	Y1205550	200	Y1200508/C	150	Y1205501	Y1200508	25



Corrugated tubes **PA6 TWINFLEX** double tubes open - black *Guaine corrugate **PA6 TWINFLEX** doppio tubo - nero*

OPERATING TEMPERATURE:

3000 h: -40 °C / +120 °C
240 h: -40 °C / +150 °C

SPECIAL FEATURES:

- Inflammability: UL 94 HB
- UV resistant DIN EN ISO 8580
- For high mechanical stresses

- High impact resistant
- IP 52

MATERIAL:
Polyamid 6

ACCESSORIES AVAILABLE:

See page accessories
Divisible fitting available on request

INTERVALLO DI TEMPERATURA:

3000 h: -40 °C / +120 °C
240 h: -40 °C / +150 °C

VANTAGGI TECNICI:

- Infiammabilità: UL 94 HB
- Resistente agli UV in conformità con DIN EN ISO 8580
- Elevate sollecitazioni meccaniche

- Elevata resistenza agli urti
- IP 52

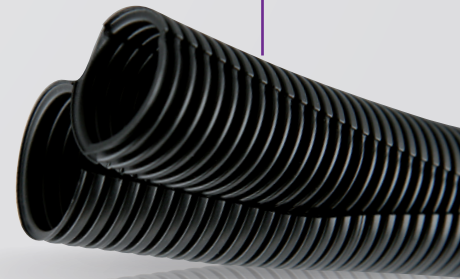
MATERIALE:
Poliammide 6

ACCESSORI DISPONIBILI:

Consultare la pagina degli accessori
Connettore divisibile disponibile su richiesta



NW	A Ø	I Ø	Part Number	Packing m
7,5	10,2	6,3	Y1245207	50
10	13,3	8,5	Y1245210	50
13	16,0	11,0	Y1245213	50
16	19,0	13,0	Y1245216	50
17	21,5	15,5	Y1245217	50
22	25,6	19,1	Y1245222	50
26	31,7	24,0	Y1245226	25
29	34,8	27,3	Y1245229	25
37	42,7	33,1	Y1245237	25
50	53,9	43,9	Y1245250	25



Corrugated tubes **PA6 BS V0** normal profile - black *Guaine corrugate **PA6 BS V0** - profilo normale - nero*

OPERATING TEMPERATURE:

3000 h: -40 °C / +120 °C
240 h: -40 °C / +150 °C

SPECIAL FEATURES:

- Inflammability: UL 94 V0
- UV resistant DIN EN ISO 8580
- For high mechanical stresses
- High impact resistant

- Conforme to the test routine of the SNCF NCE n° 478
- Classification I2 F2 acc. to standard NF F 16-101
- Non flame-extending acc. to FMVSS 302 and UL 94

MATERIAL:
Polyamid 6, fire quality - V0

ACCESSORIES AVAILABLE:
See page accessories

INTERVALLO DI TEMPERATURA:

3000 h: -40 °C / +120 °C
240 h: -40 °C / +150 °C

VANTAGGI TECNICI:

- Infiammabilità: UL 94 V0
- Resistente agli UV in conformità con DIN EN ISO 8580
- Elevate sollecitazioni meccaniche
- Elevata resistenza agli urti
- Conformità al programma di test SNCF NCE n° 478

- Comportamento al fuoco di classificazione I2 F2 secondo la norma NF F 16-101
- Autoestinguento secondo FMVSS 302 e UL 94

MATERIALE:
Poliammide 6, qualità autoestinguento V0

ACCESSORI DISPONIBILI:
Consultare la pagina degli accessori



NW	A Ø	I Ø	Bending radius	Part Number closed	Packing m
7,5	10,0	6,7	13,0	Y1206079	50
8,5	11,7	8,4	15,0	Y1206085	50
10	13,0	9,9	20,0	Y1206109	50
12	15,7	12,2	30,0	Y1206125	50
13	15,8	12,7	35,0	Y1206130	50
14	18,5	14,2	40,0	Y1206140	50
16	18,9	15,0	45,0	Y1206160	50
17	21,2	16,6	45,0	Y1206176	50
19	24,3	19,3	50,0	Y1206190	50
22	25,4	21,3	50,0	Y1206220	50
23	28,3	23,2	55,0	Y1206230	50
26	31,2	25,8	60,0	Y1206260	25
29	34,5	29,0	65,0	Y1206290	25
37	42,4	36,0	90,0	Y1206370	25
50	54,0	47,7	100,0	Y1206508	25





Metallo-plastic conduits HALO

Guaine metalliche rivestite in PVC HALO



OPERATING TEMPERATURE:
-25 °C / +150 °C

SPECIAL FEATURES:

- IP 67
- Very good behavior infire
- Classification I3 F1 according to standard NF F 16-101
- Robust protective tube for electric lines
- Railway application

MATERIAL:

- Zinc steel
- Black PVC covered

ACCESSORIES AVAILABLE:

Brass fittings

INTERVALLO DI TEMPERATURA:
-25 °C / +150 °C

VANTAGGI TECNICI:

- IP 67
- Buona efficienza di schermatura
- Ottimo comportamento al fuoco
- Applicazione ferroviaria
- Comportamento al fuoco: classificazione

I3 F1 secondo la norma NF F 16-101 registrata con il numero 222654 di euraltest

MATERIALE:

- Acciaio zincato
- Rivestimento in PVC nero

ACCESSORI DISPONIBILI:

Consultare la pagina degli accessori



Conduit for adaptors PG / ISO	A Ø	I Ø	Bending radius	Part number closed	Packing m
07 - M12	12,6	9,6	35,0	M0407200	50
09 - M16	15,4	11,4	50,0	M0409200	50
11 - M16	18,8	14,2	60,0	M0411200	50
13 - M20	20,6	16,0	60,0	M0413200	50
16 - M20	22,7	18,0	70,0	M0416200	50
21 - M25	28,5	23,0	85,0	M0421200	25
29 - M32	37,0	31,1	110,0	M0429200	25
36 - M40	47,3	40,3	140,0	M0436200	15
48 - M63	60,2	51,8	180,0	M0448200	15

Corrugated perforated tube PA6 normal profile - black

Guaine corrugate perforate PA6 profilo normale - nero



OPERATING TEMPERATURE:
-40 °C / +120 °C
> 240 h: +150 °C

SPECIAL FEATURES:

- Parallel corrugated
- Compatibility: alcohols, fats, mineral oil diesel
- Incompatibility: acid battery, sulfuric acid
- UL94 HB
- Good mechanical resistance
- Self-extinguishing acc. to FMVSS 302 and UL94

- UV resistance acc. to DIN EN ISO 8580
- Applications: industry automotive, maritime

MATERIAL:
Polyamid 6

ACCESSORIES AVAILABLE:

See page accessories

INTERVALLO DI TEMPERATURA:
-40 °C / +120 °C
> 240 h: +150 °C

VANTAGGI TECNICI:

- Compatibilità con alcoli, grassi, oli minerali, gasolio
- Incompatibilità con acidi della batteria, acido solforico
- UL94 HB
- Buona resistenza meccanica

- Autoestinguento secondo FMVSS 302
- Resistenza agli UV in conformità con DIN EN ISO 8580

MATERIALE:
Poliammide 6

ACCESSORI DISPONIBILI:

Consultare la pagina degli accessori



NW	A Ø	I Ø	Part Number	Packing m
8,5	11,7	8,4	Y1202600	50
10	13,0	9,9	Y1202601	50
13	15,8	12,7	Y1202602	50
17	21,2	16,6	Y1202603	50
22	25,4	21,3	Y1202604	50
23	28,9	23,2	Y1202605	50
26	31,2	25,8	Y1202606	25
37	42,4	36,0	Y1202607	25
50	54,0	47,7	Y1202608	25



Corrugated tubes **PA6** flat profile UFW - black *Guaine corrugate **PA6** profilo anti-vibrazioni UFW - nero*

OPERATING TEMPERATURE:

-40 °C / +120 °C
> 240 h: +150 °C

SPECIAL FEATURES:

- Unslit tube IP 68
- Parallel corrugated
- Compatibility: alcohols, fats, mineral oil diesel
- Incompatibility: acid battery, sulfuric acid
- UL94 HB
- Good mechanical resistance

- Non flame-extending acc. to FMVSS 302 and UL94
- UV resistance acc. to DIN EN ISO 8580
- Applications: industry automotive, maritime

MATERIAL:

Polyamid 6

ACCESSORIES AVAILABLE:

See page accessories

INTERVALLO DI TEMPERATURA:

-40 °C / +120 °C
> 240 h: +150 °C

VANTAGGI TECNICI:

- Guaina sigillata IP 68
- Compatibilità con alcoli, grassi, oli minerali, gasolio
- Incompatibilità con acidi della batteria, acido solforico
- UL94 HB
- Buona resistenza meccanica

- Autoestinguente secondo FMVSS 302
- Resistenza agli UV in conformità con DIN EN ISO 8580

MATERIALE:

Poliammide 6

ACCESSORI DISPONIBILI:

Consultare la pagina degli accessori



UFW	A Ø	I Ø	Part Number slit	Part Number unslit	Packing m
4,5	7,3	4,7	Y1229104	Y1229004	100
7,5	10,1	6,3	Y1229107	Y1229007	50
8,5	12,0	8,2	Y1229108	Y1229008	50
10	13,1	9,3	Y1229110	Y1229010	50
13	15,9	12,0	Y1229113	Y1229013	50
17	21,2	16,0	Y1229117	Y1229017	50
19	23,7	18,6	Y1229119	Y1229019	50
22	25,7	19,9	Y1229122	Y1229022	50
23	28,6	22,2	Y1229123	Y1229023	50
26	31,5	24,9	Y1229126	Y1229026	25
29	34,6	28,4	Y1229129	Y1229029	25
37	42,3	35,4	Y1229137	Y1229037	25



Corrugated tubes **PA12** normal profile - black *Guaine corrugate **PA12** profilo normale - nero*

OPERATING TEMPERATURE:

-40 °C / +120 °C
> 240 h: -50 °C / +130 °C

SPECIAL FEATURES:

- Parallel corrugated
- Self-extinguishing FMVSS 302 C
- Low water absorption
- Mechanical properties are not influenced by surrounding temperature
- Highly durable, bendable

- UV resistant
- Free phosphorus
- Applications: appliance, heating and airconditioning installations, robotics, electrical industry (low temperatures)...

MATERIAL:

Polyamid 12

ACCESSORIES AVAILABLE:

See page accessories

INTERVALLO DI TEMPERATURA:

-40 °C / +120 °C
> 240 h: -50 °C / +130 °C

VANTAGGI TECNICI:

- Anello parallelo
- Senza fosforo
- Autoestinguente secondo FMVSS 302 C
- Insensibile all'umidità
- Resistenza agli UV in conformità con DIN EN ISO 8580

MATERIALE:

Poliammide 12

ACCESSORI DISPONIBILI:

Consultare la pagina degli accessori



NW	A Ø	I Ø	Bending radius	Part Number closed	Packing m
7,5	10,0	6,9	13,0	Y1240607	50
8,5	11,7	8,4	12,0	Y1240608	50
10	13,0	9,9	15,0	Y1240610	50
12	15,7	12,2	22,0	Y1240612	50
13	15,8	12,7	25,0	Y1240613	50
14	18,5	14,2	30,0	Y1240614	50
17	21,2	16,6	27,0	Y1240617	50
22	25,4	21,3	50,0	Y1240622	50
23	28,3	23,2	45,0	Y1240623	50
29	34,5	29,0	50,0	Y1240629	25
37	42,4	36,0	80,0	Y1240637	25
50	54,0	47,7	100,0	Y1240650	25



PLASTIC

HALOGEN
FREE

KOMBI fittings

Raccordi KOMBI



OPERATING TEMPERATURE:
-40 °C / +110 °C

automotive, marine industry, railway

SPECIAL FEATURES:

- Not easily inflammable
- Easy monting
- IP 65 without sealing
- IP 67 with sealing
- For mechanical engineering and facility constructions, robotics,

MATERIAL:

- Polyamid 6
- UL 94 V0

FOR CONDUITS:

Plastic profile normal

INTERVALLO DI TEMPERATURA:
-40 °C / +110 °C

MATERIALE:

- Poliammide 6
- UL 94 V0

VANTAGGI TECNICI:

- Difficilmente infiammabile
- Facile installazione
- IP 65 senza guarnizione
- Per sistemi robotici, industria marittima, automotive e ferroviaria

PER GUAINE:

Profilo normale in plastica



Thread	Clamping capacity	SW1 mm	SW2 mm	E mm	Part number	Packing	For conduits NW
M16	5 - 10	19,0	19,0	9,0	Y3805621	25	10
M16	5 - 10	27,0	27,0	9,0	Y3805622	25	12
M20	5 - 12	24,0	27,0	10,0	Y3805624	25	17
M20	7 - 14	27,0	27,0	10,0	Y3805625	25	17
M25	7 - 14	27,0	27,0	10,0	Y3805626	25	17
M25	9 - 16	33,0	36,0	11,0	Y3805628	25	23
M32	16 - 25	42,0	40,0	11,0	Y3805629	10	29

CLAMPS FOR PLASTIC CORRUGATED TUBES black

STAFFE nere

PLASTIC

HALOGEN
FREE

OPERATING TEMPERATURE:
-25 °C / +100 °C

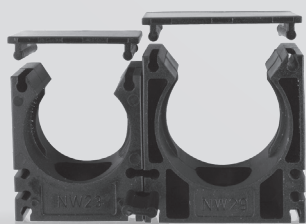
FOR CONDUITS:
Corrugated plastic tubes

INTERVALLO DI TEMPERATURA:
-25 °C / +100 °C

PER GUAINE:
Corrugate

MATERIAL:
Polyamid 6

MATERIALE:
Poliammide 6



CORRUGATED TUBE HOLDER

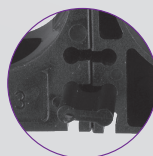
L mm	H mm	B mm	Part number	Packing	For conduits NW
20,0	18,0	20,0	N1213075	100	7,5
20,0	23,0	20,0	N1213090	100	8,5 - 10
20,0	26,0	22,0	N1213120	50	12 - 13
20,0	33,0	28,0	N1213140	50	14 - 16
20,0	33,0	28,0	N1213170	50	17
20,0	40,0	35,0	N1213220	100	22
20,0	40,0	35,0	N1213230	50	23
20,0	45,0	43,0	N1213290	30	29
20,0	53,0	54,0	N1213360	20	37
20,0	66,0	68,0	N1213480	20	50

CAP FOR CORRUGATED TUBE HOLDER



For NW	Part Number	Packing
7,5 - 10	N1213092	100
12 - 13	N1213122	50
14 - 16 - 17	N1213172	50
22 - 23	N1213222	50
29	N1213292	30
37	N1213362	20
50	N1213482	20

CONNECTING



For NW	Part Number	Packing
7,5 - 50	Y8221400	100



BRASS

BRASS FITTINGS RACCORDI

OPERATING TEMPERATURE:
-40 °C / +80 °C

SPECIAL FEATURES:

- IP 54
- Connector enclosing a insulated protective terminal socket to be screwed on the conduit

MATERIAL:
Nickel-plated brass

FOR CONDUITS:

- MS
- MSB
- HALO

INTERVALLO DI TEMPERATURA:
-40 °C / +80 °C

VANTAGGI TECNICI:

- IP 54
- Raccordo di bloccaggio per un cappuccio di protezione isolante da avvitare sulla guaina

MATERIALE:
Ottone nichelato

PER GUAINA:

- MS
- MSB
- HALO



Thread	SW1 mm	SW2 mm	E mm	B P mm	Part number	Packing	Fittings for conduits
M12	17,0	19,0	5,0	7,5	J0812500	50	M0407007 -
M16	20,0	22,0	5,0	9,0	J0816540	50	M0409001 M0009003
M16	24,0	26,0	5,0	12,0	J0816500	50	M0411004 M0011006
M20	26,0	28,0	6,0	14,0	J0820540	50	M0413008 M0013000
M20	28,0	30,0	6,0	16,0	J0820500	50	M0416009 M0016001
M25	36,0	38,0	7,0	20,0	J0825500	20	M0421003 M0021005
M32	46,0	48,0	8,0	27,0	J0832500	20	M0429009 M0029001
M40	58,0	60,0	8,0	35,0	J0840500	20	M0436007 M0036009
M63	70,0	75,0	10,0	45,5	J0863500	5	M0448000 M0048002

Thread	SW1 mm	SW2 mm	E mm	B P mm	Part number	Packing	Fittings for conduits
PG07	17,0	19,0	9,0	7,5	J0707503	50	M0407007 -
PG09	20,0	22,0	9,0	9,0	J0709507	50	M0409001 M0009003
PG11	24,0	26,0	10,0	12,0	J0711500	50	M0411004 M0011006
PG13	26,0	28,0	10,0	14,0	J0713504	50	M0413008 M0013000
PG16	28,0	30,0	10,0	16,0	J0716505	50	M0416009 M0016001
PG21	36,0	38,0	11,0	20,0	J0721509	50	M0421003 M0021005
PG29	46,0	48,0	11,5	27,0	J0729505	25	M0429009 M0029001
PG36	57,0	60,0	11,5	35,0	J0736503	10	M0436007 M0036009
PG48NFC	70,0	75,0	16,0	45,5	J0748506	5	M0448000 M0048002
PG48DIN	70,0	75,0	16,0	45,5	J0749506	5	M0448000 M0048002



SEM FAST straight / 90° elbow fittings Raccordi SEM FAST diritti/a gomito 90°

OPERATING TEMPERATURE:
-40 °C / +120 °C

SPECIAL FEATURES:

- Montage facile et rapide
- IP 65 / IP 68 with flat seal

MATERIAL:
Polyamid 6

FOR CONDUITS:
Plastic profile normal

INTERVALLO DI TEMPERATURA:
-40 °C / +120 °C

VANTAGGI TECNICI:

- Installazione facile e rapida
- IP 65 / IP 68 con guarnizione

MATERIALE:
Poliammide 6

PER GUAINA:
Profilo normale in plastica



Thread	SW mm	Part number	Packing	For conduits NW
M12	14,0	Y3805047	50	7,5
M12	16,0	Y3805011	50	8,5
M12	17,0	Y3805000	50	10
M16	17,0	Y3805001	50	10
M16	20,0	Y3805007	50	12 - 13
M20	20,0	Y3805008	50	12 - 13
M20	27,0	Y3805002	50	17
M25	27,0	Y3805003	50	17
M25	32,0	Y3805022	25	22
M25	34,0	Y3805013	25	23
M32	41,0	Y3805015	20	29
M40	50,0	Y3805017	10	37
M50	64,0	Y3805019	5	50
M63	64,0	Y3805020	5	50

Thread	SW mm	Part number	Packing	For conduits NW
PG07	14,0	Y3805028	50	7,5
PG07	16,0	Y3805012	50	8,5
PG07	17,0	Y3805024	50	10
PG09	17,0	Y3805004	50	10
PG09	20,0	Y3805017	50	12 - 13
PG11	17,0	Y3805050	50	10
PG11	20,0	Y3805009	50	12 - 13
PG13,5	20,0	Y3805010	50	12 - 13
PG13,5	17,0	Y3805064	50	10
PG13,5	17,0	Y3805005	50	17
PG16	27,0	Y3805006	50	17
PG21	32,0	Y3805023	25	22
PG21	34,0	Y3805014	25	23
PG29	41,0	Y3805016	20	29
PG36	50,0	Y3805018	10	37
PG48	64,0	Y3805021	5	50

Thread	Part number	Packing	For conduits NW
M16	Y3805200	50	10
M16	Y3805205	50	12 - 13
M20	Y3805206	50	12 - 13
M20	Y3805211	25	17
M25	Y3805212	25	17
M25	Y3805217	20	23
M32	Y3805218	20	23
M32	Y3805223	10	29
M40	Y3805224	10	29
M40	Y3805229	10	37
M50	Y3805230	10	37
M50	Y3805235	5	50
M63	Y3805236	5	50

Thread	Part number	Packing	For conduits NW
PG09	Y3805201	50	10
PG11	Y3805207	50	12 - 13
PG13,5	Y3805214	25	17
PG16	Y3805213	25	17
PG21	Y3805219	20	23
PG29	Y3805225	10	29
PG36	Y3805231	10	37
PG48	Y3805237	5	50





Solutions Industry & Building®

**SEDE PRINCIPALE,
STABILIMENTO
HEADQUARTERS, PLANT**

FRANCIA

25, rue Théophile Somborn
F-57220 BOULAY-MOSELLE
Tel. +33 (0)3 87 79 20 22
E-mail: contact@sibadr.com

ITALIA

Viale Cesar Battisti, 43
I-24047 TREVIGLIO BG
Tel. +39 348 3860 212
E-mail: sibadr.it@sibadr.com

**DIPARTIMENTO COMMERCIALE
SALES DEPARTMENT**

FRANCIA

Tel. +33 (0)3 87 79 39 81
+33 (0)3 87 79 39 80
E-mail: sibadr.fra@sibadr.com

EXPORT

Tel. +33 (0)3 87 79 35 63
+33 (0)3 87 79 35 48
E-mail: export@sibadr.com



Condizioni generali per la vendita
Terms and conditions of sales

Scan me



www.sibadr.com